



OPERATING INSTRUCTIONS & PARTS LIST

ECO I-55 GALVANIZED

VERSION	N/A
MODEL	ECO I-55 GALVANIZED PALLET TRUCK
APPLICABLE PRODUCTS	ECO I-55 GALVANIZED

NOTE: Owner and operator MUST read and understand the operating instructions before using the unit.

ATTENTION:

1. The waste packages should be sorted and put into solid dustbins according to the materials and be collected disposal by local special environment protection bureau. To avoid pollution, it's forbidden to throw away the wastes randomly.
2. To avoid leaking during the use of the products, the user should prepare some absorbable materials (scraps of wooden or dry duster cloth) to absorb the leaking oil in time. To avoid second pollution to the environment, the used absorbable materials should be handed in to special departments in terms of local authorities.

Thank you for using our pallet trucks. Your pallet truck is made of high quality steel and is designed for the horizontal lifting and transport of loads on a pallet or standardized containers on a level, fixed base. For your safety and correct operation, please carefully read this instruction before using it.

NOTE: All of the information reported herein is based on data available at the moment of printing. We reserve the right to modify our own products at any moment without notice and liability in any sanctions. So, it is suggested to always verify possible updates and changes.

1. GENERAL SPECIFICATIONS

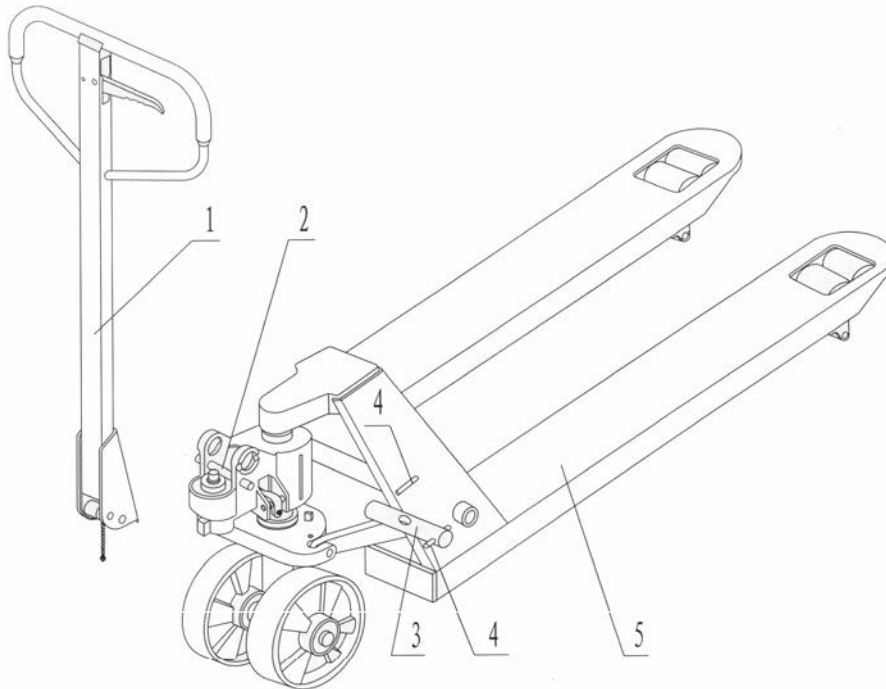
Capacity	2000kg / 4400lbs
Max Fork Height	200mm / 7.9"
Min Fork Height	75mm / 2.9"
Fork Length	1220mm / 48"
Width Overall Fork	520 or 685mm / 20.5 or 27"
Individual Fork Width	160mm / 6.3"
Load Wheel Diameter	Ø 74x70mm / 2.9x2.7" Nylon
Steering Wheel Diameter	Ø 180mm / 7" Nylon

Materials and specifications are subject to change without notice.

2. ATTACHING DRAW-BAR TO PUMP UNIT

If you have purchased a wooden box of pallet truck, some assembly is required. Certainly, you need some tools, a hammer, a pliers, a spanner, etc; and some parts, one axle with hole (105), two elastic pins (106) (**Note one is in the axle (105)**), these parts are putted in a plastic bag, which is putted into the draw-bar.

NOTE: The number of draw-bar and pump should be the same.



1. Draw-bar 2. Pin 3. Axle with hole 4. Elastic pin 5. Fork frame

Fig. 1

When attaching the handle, you had better squat just behind the pallet truck. Then you:

2.1 Insert the draw-bar onto the pump piston (303), then use a hammer to insert the axle with hole (105) into the hydraulic pump and draw-bar **from the right to left.** (See fig. 2).



Fig. 2

2.2 Let control handle (117) to the '**LOWER**' position, then pass the adjusting nut (104), adjusting bolt (103) and chain (102Z) through the hole of axle(105) with your hand (See fig. 3).

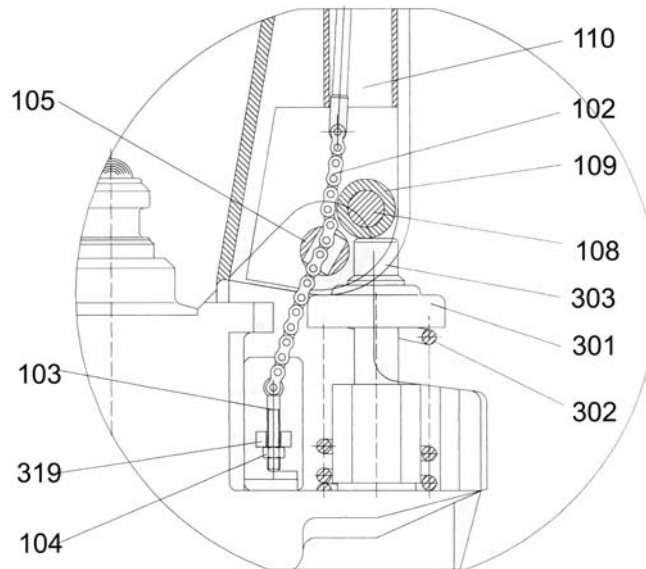


Fig. 3

2.3 Press the draw-bar (110Z) down, take away the pin (#2) (See Fig. 1).

2.4 Let the control handle (117) on '**RAISE**' position, then raise the lever plate (319) with the pin (#2) and insert the adjusting bolt (103) into the front slot of lever plate (319), note to keep the adjusting nut (104) on the underside of the lever plate.

2.5 Use a hammer to tap another elastic pin (106) into the axle with hole (105).
The draw-bar is now assembled to the pump.

3. ADJUSTING RELEASE DEVICE

On the draw-bar of this pallet truck, you can find the control handle (117) which can be adjusted in three positions:

- Raise** -handle down
- Drive** -handle in center position
- Lower** -handle up, the lever moves back the drive position when released.

If however they have been changed, you can adjust according to following step:

3.1 If the forks elevate while pumping in the **DRIVE** position, turn the adjusting nut (104) on the adjusting bolt(103) or screw(318) clockwise until pumping action does not raise the forks and the

DRIVE position functions properly.

- 3.2 If the forks descend while pumping in the **DRIVE** position, turn the nut (104) or screw(318) Counter-clockwise until the forks do not lower.
- 3.3 If the forks do not descend when the control handle (117) is in the **LOWER** position, turn the nut (104) or screw (318) clockwise until raising the control handle(117) lowers the forks. Then check the **DRIVE** position according to item 3.1 and 3.2 to be sure the nut (104) and screw (318) is in the proper position.
- 3.4 If the forks do not elevate while pumping in the **RAISE** position, turn the nut (104) or screw (318) Counter-clockwise until the forks elevate. Then check the **LOWER** and **DRIVE** position according to item 3.1, 3.2 and item 3.3.

4. **MAINTENANCE**

The pallet truck is largely maintenance-free.

4.1 OIL

Please check the oil level every six months. The oil can be hydraulic oil: ISO VG32, its viscosity should be 30cSt at 40⁰ C, total volume is about 0.4lt.

4.2 TO BANISH THE AIR

The air may come into the hydraulic oil because of transportation or pump in upset position. It can cause that the forks do not elevate while pumping in the **RAISE** position. The air can be removed in the following way: let the control handle (117) on the **LOWER** position, then move the draw-bar up and down for several times.

4.3 DAILY CHECK AND MAINTENANCE

Daily check of the pallet truck can limit wear as much as possible. Special attention should be paid to the wheels, the axles, as thread, rags, etc. It may block the wheels. The forks should be unloaded and lowered in the lowest position when the job is over.

4.4 LUBRICATION

All bearings and shafts are provided with long-life grease at the factory. You only need provide with long-life grease at monthly intervals or after each time the truck is cleaned thoroughly to the lubrication points.

5 **GUIDE TO SAFETY OPERATION**

- 5.1 Operator should read all warning signs and instructions here and on the pallet truck before using this truck.
- 5.2 Do not use on a slopping ground.
- 5.3 Do not operate a pallet truck unless you are familiar with it and have been trained or authorized to do so.
- 5.4 Do not operate a pallet truck unless you have checked its condition. Give special attention to the wheels or rollers, the draw-bar unit, the fork unit, the lever plate, etc. .
- 5.5 To pull the truck, always move the control handle into the drive position. This makes the draw-bar easier to move and depressurizes the pump section of the hydraulics. This preserves the hydraulic seals and the valve components. A long service life can be expected.
- 5.6 Do not take up any people on the pallet truck.
- 5.7 The operator had better take on gloves for labor protecting.

5.8 When the goods have been transported, all people should be away from the forks for 600mm.

5.9 Do not load goods like fig. 5/B .

5.10 Do not load over maximum capacity.

5.11 At others special condition or place, the operator should be carefully to operate the pallet truck.

6. TROUBLES SHOOTING

No	Trouble	Clause	Fixing Methods
1	The forks cannot be lifted up the maximum height.	The hydraulic oil is not enough.	Pour in the oil.
2	The forks cannot be lifted up.	Without hydraulic oil. The oil has impurities. The nut (104) is too high, keep the pumping valve open. Air has gotten into the hydraulic oil.	Fill in the oil. Change the oil. Adjust the nut (104) or screw (318) (see item 3.4) Banish the air.(see item 4.2)
3	The forks cannot be lowered.	The piston rod (328) or pump (322) is deformed resulting from partial loading slanting to one side or over-loading. The fork was kept in the high position for long time with piston rod bared to arise in rusting and jamming of the rod. The adjusting nut (104) or screw (318) is not in correct position.	Replace the piston rod (328) or pump (322). Keeping the fork in the lowest position if not using, and pay more attention to lubricate the rod. Adjust the nut (104) or screw (318) (see item 3.3)
4	Leaks	Sealing parts worn or damaged. Some part has cracked or worn small.	Replace with the new one. Replace with the new one.
5	The forks lowered without the release valve working.	The impurities in the oil cause the release valve to be unable to close tight. Some parts of hydraulic system is cracked or bored. Air comes into the oil. Sealing parts worn or damaged. The adjusting nut (104) or screw (318) is not in the correct position.	Replace with new oil. Inspect and replace the waste parts. Banish the air. (See item 4.2) Replace with the new one. Adjusting the nut (104) or screw (318). (See item 3.2)

NOTE: DO NOT ATTEMPT TO REPAIR THE PALLET TRUCK UNLESS YOU ARE TRAINED AND AUTHORIZED TO DO SO.

Fig. 4

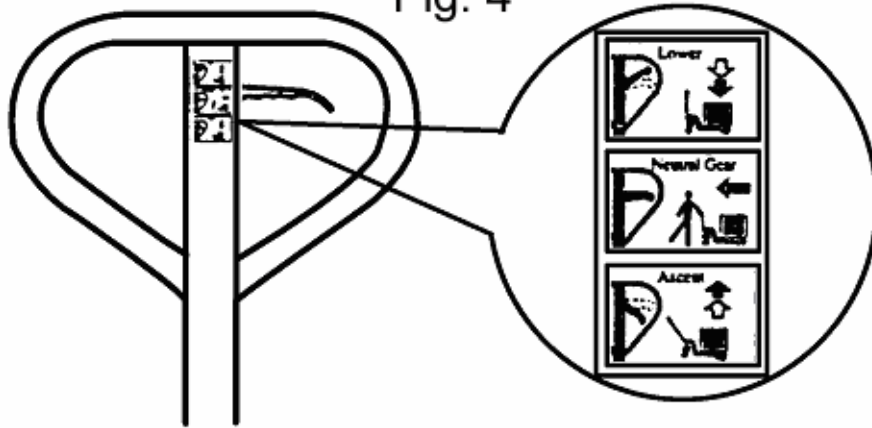
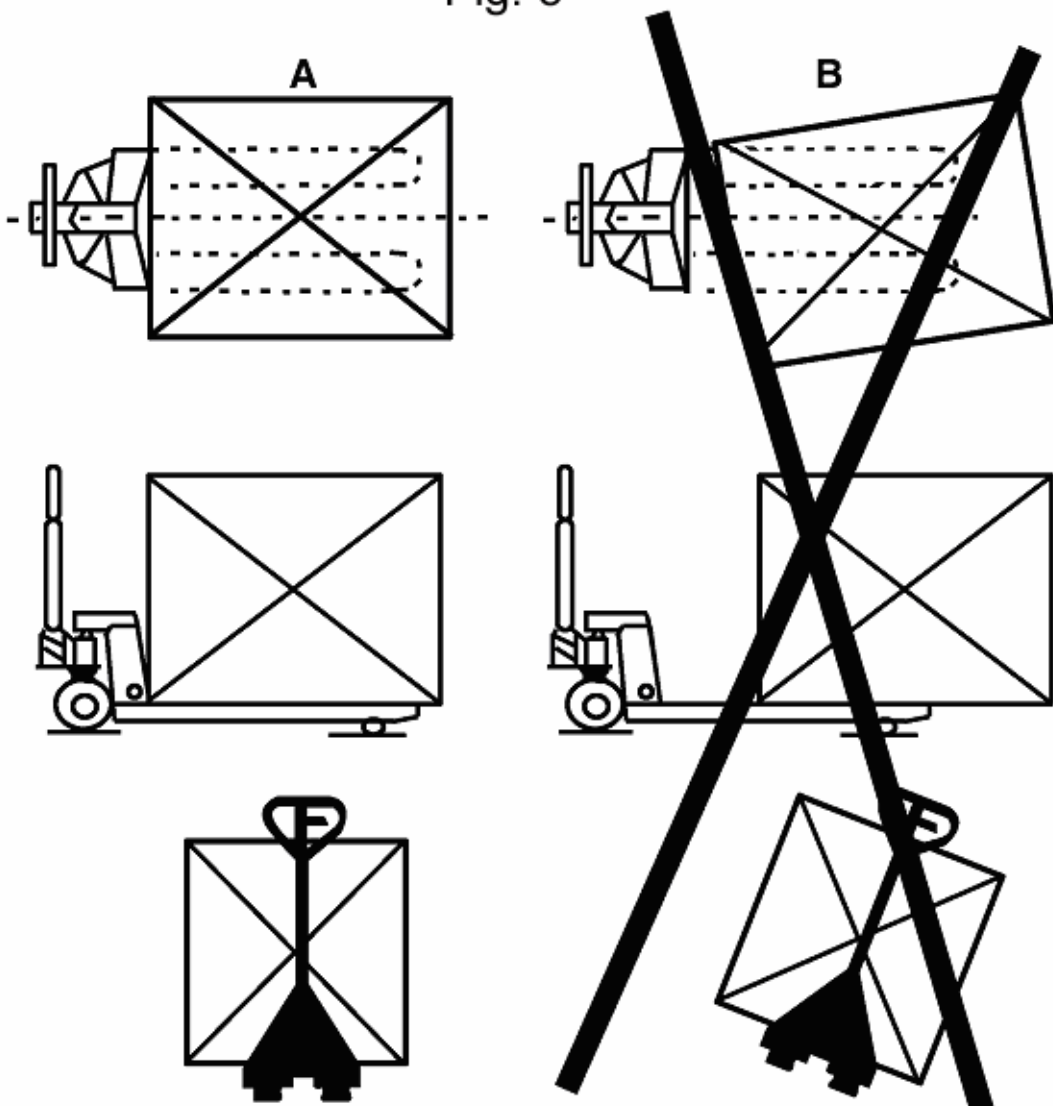
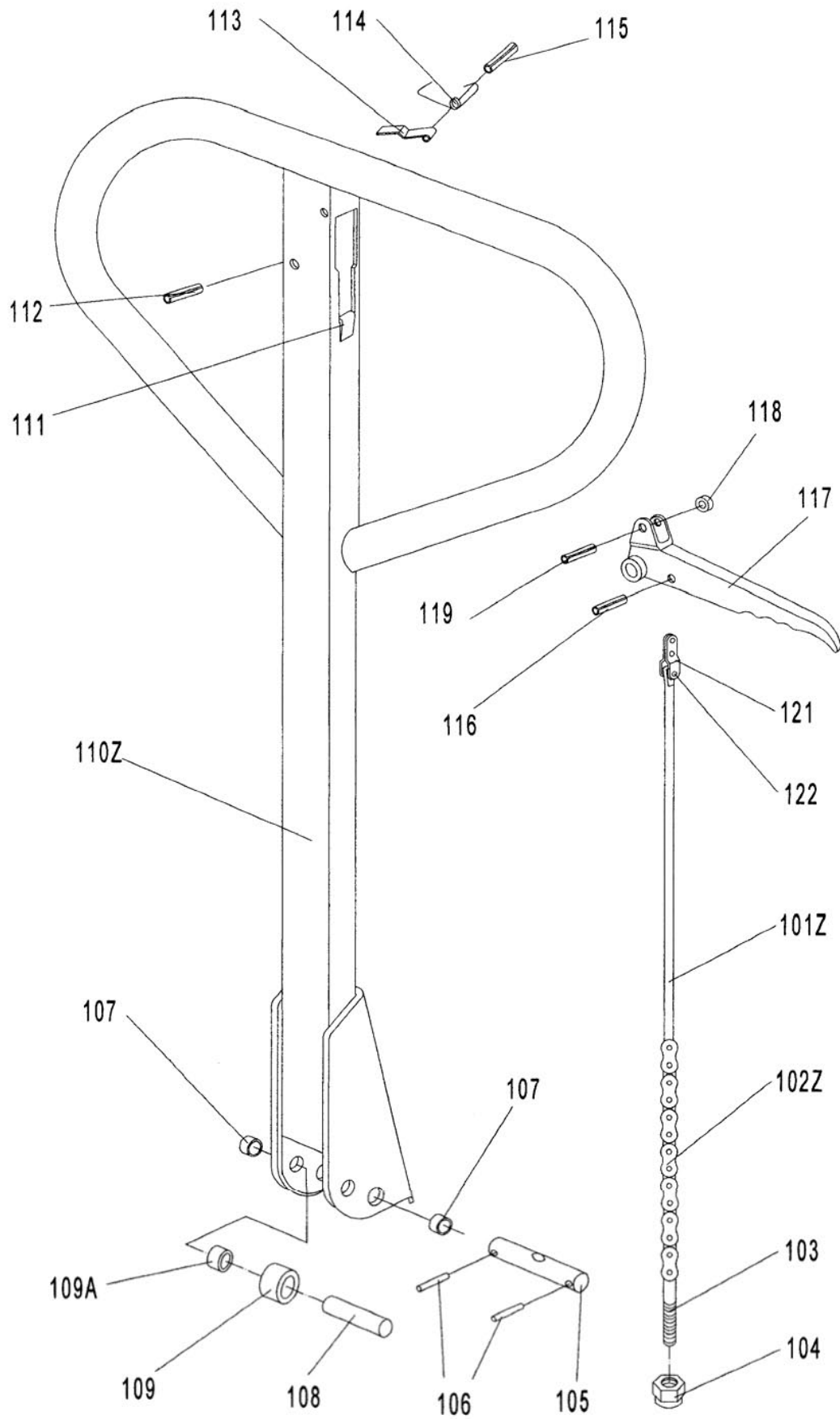


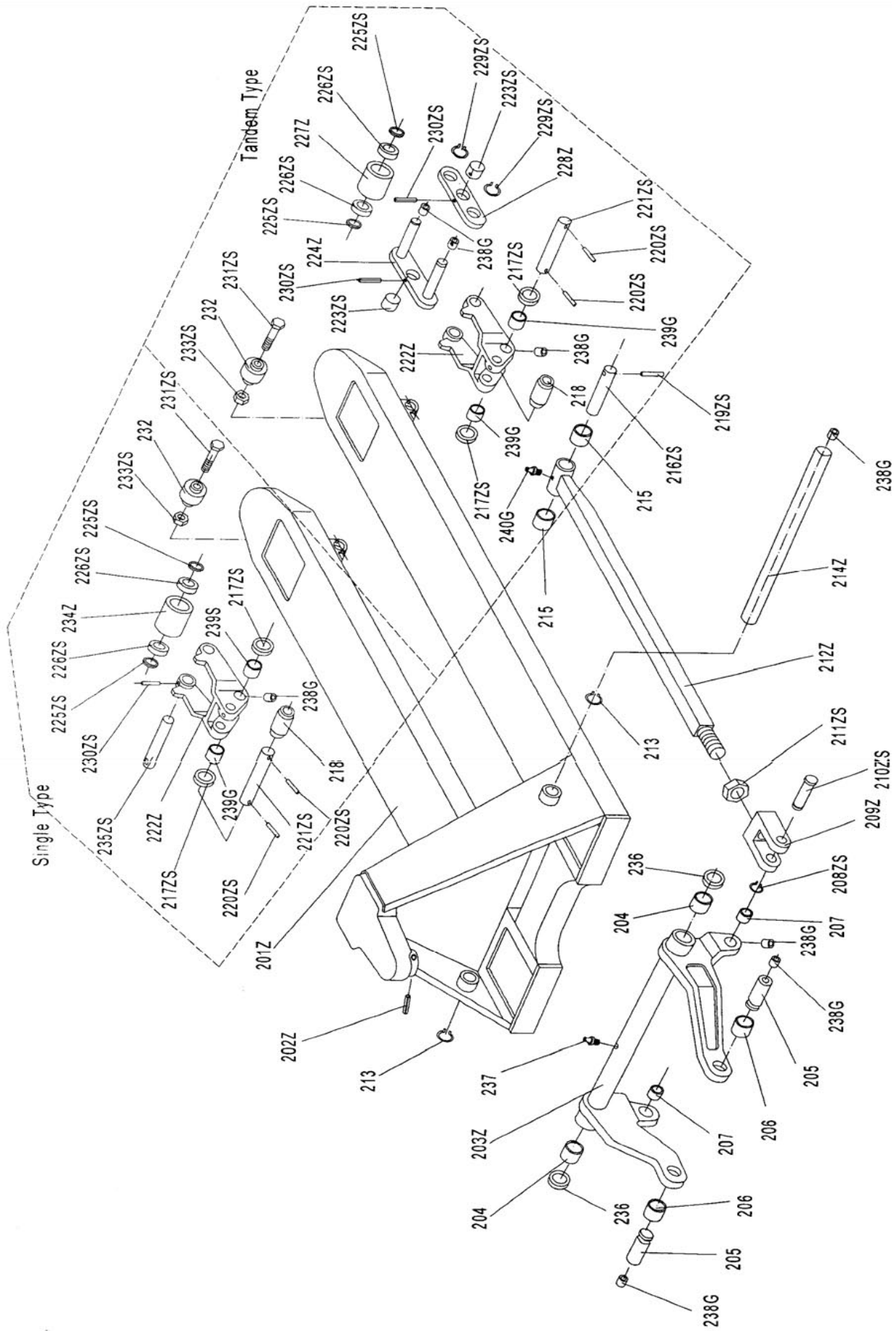
Fig. 5





LIST of DRAW-BAR

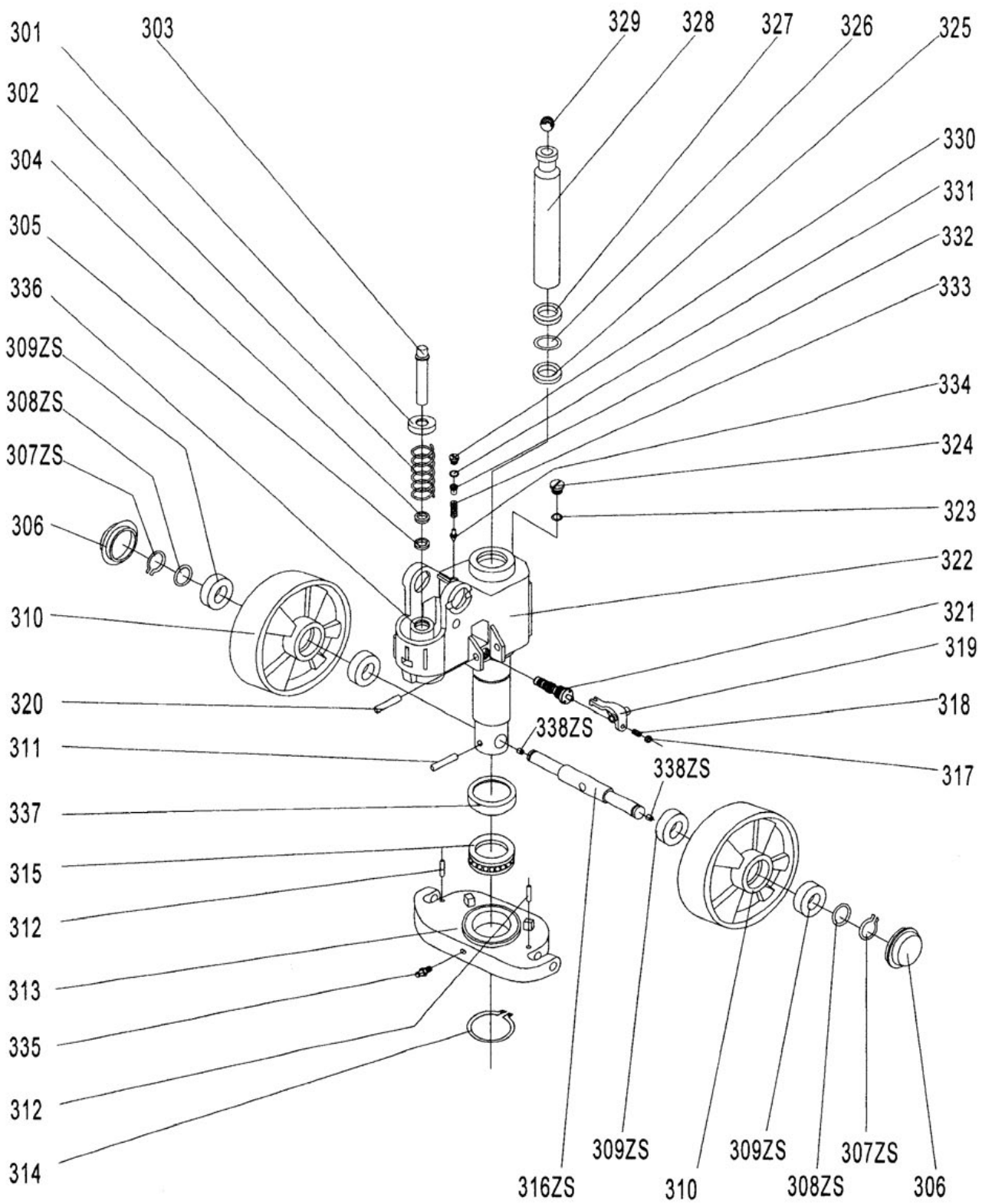
No.	Mobile No.	Description	Quantity
101Z	18E101ZG	Release Rod	1
102Z	18E102ZG	Chain	1
103	18E103	Adjusting Bolt	1
104	18E104	Adjusting Nut	1
105	18E105	Axle with Hole	1
106	18E106	Elastic Pin	2
107	18E107	Bushing	2
108	18E108	Roller Pin	1
109	18E109	Pressure Roller	1
109A	18E109A	Bushing	1
110Z	18E110ZG	Draw-bar	1
111	18E111	Stop Rubber	1
112	18E112	Elastic Pin	1
113	18E113	Blade Spring	1
114	18E114	Spring	1
115	18E115	Elastic Pin	1
116	18E116	Elastic Pin	1
117	18E117	Control Handle	1
118	18E118	Roller	1
119	18E119	Elastic Pin	1
121	18E121	Pull Board	1
122	18E122	Pin	1



LIST of FORK FRAME

No.	Mobile No.	Description	Quantity
201Z	18E201ZG	Fork Frame	1
202Z	18E202ZG	Elastic Pin	1
203Z	18E203ZG	Rock - Arm	1
204	18E204	Bushing	2
205	18E205	Shaft	2
206	18E206	Bushing	2
207	18E207	Bushing	2
208ZS	18E208ZSG	Retaining Ring	2
209Z	18E209ZG	Joint	2
210ZS	18E210ZSG	Pin	2
211ZS	18E211ZSG	Nut	2
212Z	18E212ZG	Pushing Rod	2
213	18E213	Retaining Ring	2
214Z	18E214ZG	Shaft	1
215	18E215	Bushing	4
216ZS	18E216ZSG	Shaft	2
217ZS	18E217ZSG	Intermediate Roller	4
218	18E218	Extending Roller	2
219ZS	18E219ZSG	Elastic Pin	2
220ZS	18E220ZSG	Elastic Pin	4
221ZS	18E221ZSG	Shaft	2
222Z	18E222ZG	Frame of Roller	2
223ZS*	18E223ZSG	Shaft	4
224Z*	18E224ZG	Tandem mounting with pin	4
225ZS	18E225ZSG	Washer	8 or 4
226ZS	18E226ZSG	Bearing	8 or 4
227Z*	18E227NT-7	Tandem Load Roller	4
228Z*	18E228ZG	Tandem Mounting	2
229ZS*	18E229ZSG	Spring Washer	4
230ZS	18E230ZSG	Elastic Pin	4 or 2
231ZS	18E231ZSG	Bolt	2
232	18E232	Enter Roller	2
233ZS	18E233ZSG	Locking Nut	2
234Z#	18E234N-7	Load Roller	2
235ZS#	18E235ZSG	Shaft for Roller	2
236	18E236G	Washer	2
237	18E237G	Grease Cup	1
238G	18E238G	Grease Cup	14 or 8
239G	18E239G	Bushing	4
240G	18E240G	Grease Cup	2

NOTE: *-- For double wheel #-- For single wheel



LIST of HYDRAULIC PUMP

No.	Mobile No.	Description	Quantity
301	18E301	Spring Cap	1
302	18E30	Spring	1
303	18E303	Pump Piston	1
304	18E304	Dust Ring	1
305	18E305	Seal	1
306	18E306	Dust Cover	2
240	18E240G	Locking Ring	2
308ZS	18E308ZSG	Washer	2
309ZS	18E309ZSG	Bearing	4
310	18E310N-1	Nylon Steering Wheel	2
311	18E311	Elastic Pin	1
312	18E312	Elastic Pin	2
313	18E313	Thrust Plate	1
314	18E314	Retaining Ring	1
315	18E315	Bearing	1
316ZS	18E316ZSG	Shaft of loading Wheel	1
317	18E317	Nut	1
318	18E318	Screw	1
319	18E319	Lever Plate	1
320	18E320	Elastic Pin	1
321	18E321	Valve Cartridge	1
322	18E322G	Pump Body	1
323	18E323G	Seal Washer	1
324	18E324G	Screw Plug	1
325	18E325	Seal	1
326	18E326	O – Ring	1
327	18E327	Dust Ring	1
328	18E328	Piston Rod	1
329	18E329	Steel Ball	1
330	18E330G	Screw Plug	1
331	18E331G	O - Ring	1
332	18E332G	Bolt	1
333	18E333G	Spring	1
334	18E334G	Spindle of Safety Valve	1
335	18E335	Grease Cup	1
336	18E336	Cylinder	1
337	18E337	Cover of Bearing	1
338ZS	18E338ZSG	Grease Cup	2



MOBILE INDUSTRIES, INC.
3750B Laird Rd - Unit 2 & 3
Mississauga ON, L5L 0R6
Canada

Toll Free: 1 800 527 4612 • Local 905 279 5370
Email: info@mobilept.com

MOBILEPT.COM