



OPERATING INSTRUCTIONS & PARTS LIST

IBT PALLET TRUCK

VERSION	N/A
MODEL	IBT55 PALLET TRUCK
APPLICABLE PRODUCTS	N/A

WARNING: Owner and operator **MUST** read and understand the operating instructions before using the unit.

Note: All of the information reported herein is based on data available at time of printin. Mobile reserves the right to modify its own products at any time without notice or incurring in any sanction. Please verify with Mobile for possible updates.

Thank you for choosing our pallet truck. For your safety and correct operation, please carefully read the manual before use.

NOTE: All of the information reported herein is based on data available at the time of printing. The factory reserves the right to modify its own products at any time without notice or incurring in any sanction. Please verify with the factory for possible updates.

1. GENERAL SPECIFICATIONS

Capacity	2500kg / 5500lbs
Max. Fork Height	200mm / 7.9"
Min. Fork Height	75mm / 2.9"
Fork Length	1220mm / 48"
Width Overall Forks	520 or 685mm / 20.5 or 27"
Individual Fork Width	160mm / 6.3"
Load Wheel Diameter	Ø 74 x 70mm / 2.9 x 2.75" Nylon, Polyurethane
Steering Wheel Diameter	Ø 180 Nylon, Polyurethane, Rubber

Materials and specification are subject to change without notice.

2. TO ATTACH HANDLE TO PUMP UNIT

2.1 Remove 3 bolts (D611) from the handle bracket (D151).

2.2 Set handle (D610A, D610B or D610AS) on the bracket (D151), notice to allow the chain (D612) and the adjusting bolts (D614) assembly to pass through the hole in the center of the bracket (D151) and shaft (D153).

2.3 Insert the 3 bolts (D611) through the handle into the bracket (D151), then tighten them securely.

2.4 Raise the lever plat (D132) and insert the adjusting bolt (D614) into the front slot, keeping the adjusting nut (D615) on the under side of the lever plat (D132).

3. TO ADJUST RELEASE DEVICE

On the draw-bar of this pallet truck, you can find the control handle (D608 or D608S) which can be regulated in three positions:

Raise - handle down

Drive position - handle in center position

Lower - handle up, the lever moves back the drive position when released.

If however they have been changed, you can adjust according to following step:

3.1 If the forks elevate while pumping in the **DRIVE** position, turn the adjusting nut (D615) on the adjusting bolt (D614) or adjusting screw (D133) clockwise until pumping action does not raise the forks and the **DRIVE** position functions properly.

3.2 If the forks descend while pumping in the **DRIVE** position, turn the nut (D615) or adjusting screw (D133) counter-clockwise until the forks do not lower.

3.3 If the forks do not descent when the control handle (D608 or D608S) is in the **LOWER** position, turn the nut (D615) or adjusting screw (D133) clockwise until raising the control handle (D608 or D608S) lowers the forks. Then check the **DRIVE** position according to item 3.1 and 3.2 to be sure the nut (D615) or adjusting screw (D133) is in the proper position.

3.4 If the forks do not elevate while pumping in the **RAISE** position, turn the nut (D615) or adjusting screw (D133) counter-clockwise until the forks elevate while pumping in the **RAISE** position. Then check the **LOWER** and **DRIVE** position according to item 3.1, 3.2 and 3.3.

4. MAINTENANCE

Your pallet truck is largely maintenance-free.

4.1 OIL

Please check the oil level every six months. The oil capacity is about 0.3lt. Use the hydraulic type oil according to temperature scale below.

Temperature	Oil
-20°C~+40°C	L-HV46 Hydraulic oil

4.2 HOW TO EXPEL AIR FROM THE PUMP UNIT

The air may come into the hydraulic oil because of transportation or pump in upset position. It can cause that the forks do not elevate while pumping in the **RAISE** position. The air can be banished in the following way: let the control handle (D608 or D608S) on the **LOWER** position, then move the handle (D610A, D610B or D610AS) up and down for several times.

4.3 DAILY CHECK AND MAINTENANCE

Daily check of the pallet truck can limit wear as much as possible. Special attention should be paid to the wheels, the axles, as thread, rags, etc. It may block the wheels. The forks should be unloaded and lowered in the lowest position when the job is over.

4.4 LUBRICATION

Use motor oil or grease to lubricate all moveable parts.

5. GUIDE TO SAFETY OPERATION

For safe operation of the Hand Pallet Truck, please read all warning signs and instructions here and on the pallet truck prior to use.

- 5.1 Do not operate the pallet truck unless you are familiar with it and have been trained or authorised to do so.
- 5.2 Do not operate the truck unless you have been trained and authorised. Give special attention to the wheels, the handle assembly, the forks, and the lower control.
- 5.3 Do not use the truck on sloping ground.
- 5.4 Never place any part of your body in the lifting mechanism or under the forks or load. Do not carry passengers.
- 5.5 We advise that operators should wear gloves and safety shoes.
- 5.6 Do not handle unstable or loosely stacked loads.
- 5.7 Do not overload the truck.
- 5.8 Always place loads centrally across the forks and not at the end of the forks (See Fig. 2).
- 5.9 The capacity of the truck assumes an evenly distributed load with the centre of the load being

at the halfway point of the length of the forks.

5.10 Make sure that length of the forks matches the length of the pallet.

5.11 Lower the forks to lowest height when the truck is not being used.

5.12 In other specific conditions the operators should take extra care in operating the truck.

6. TROUBLES SHOOTING

No	Trouble	CAUSE	ACTION
1	The forks can not be up the max height.	- The hydraulic oil is not enough.	- Pour in the oil.
2	The forks can not be lifted up.	- Without hydraulic oil. - The oil has impurities. - The nut (D615) is too high or the screw (D133) is too close, keep the pumping valve open. - Air come into the hydraulic oil.	- Fill in the oil. - Change the oil. - Adjust the nut (D615) or the screw (D133) .(see item 3.4) - Banish the air.(see item 4.2)
3	The forks can not be descended.	- The piston rod (D147) or pump body is deformed resulting from partial loading slanting to one side or over-loading. - The fork was kept in the high position for long time with piston rod bared to arise in rusting and jamming of the rod. - The adjusting nut (D615) or the screw (D133) is not in the correct position.	- Replace the piston rod (D147) or pump body. - Keeping the fork in the lowest position if not using, and pay more attention to lubricate the rod. - Adjust the nut (D615) or the screw (D133). (see item 3.3)
4	Leaks	- Sealing parts worn or damaged. - Some part cracked or worn into small.	- Replace with the new one. - Replace with the new one.
5	The fork descends without the release valve worked.	- The impurities in the oil cause the release valve to be unable to close tight. - Some parts of hydraulic system is cracked or bored. - Air has gotten into the oil. - Sealing parts worn or damaged. - The adjusting nut (D615) or the screw (D133) is not in the correct position.	- Replace with new oil. - Inspect and replace the waste parts. - Banish the air. (See item 4.2) - Replace with the new one. - Adjusting the nut (D615) or the screw (D133). (See item 3.2)

***NOTE: DO NOT ATTEMPT TO REPAIR THE PALLET TRUCK UNLESS YOU ARE TRAINED AND AUTHORIZED TO DO SO.**

Fig.1

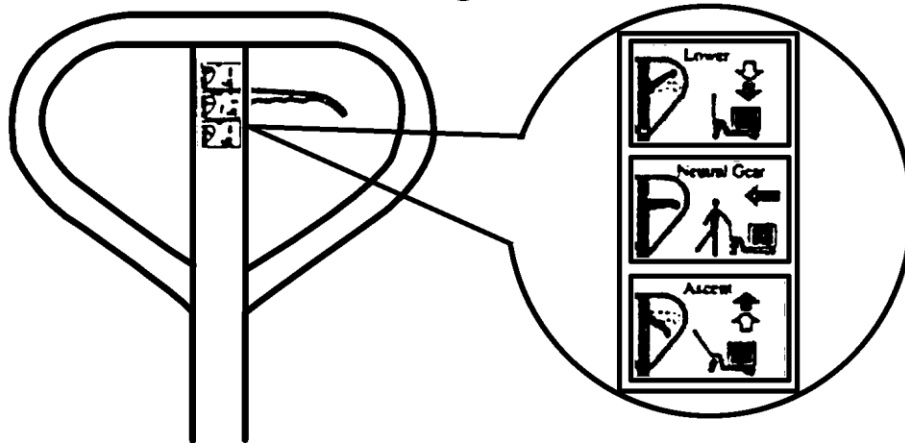
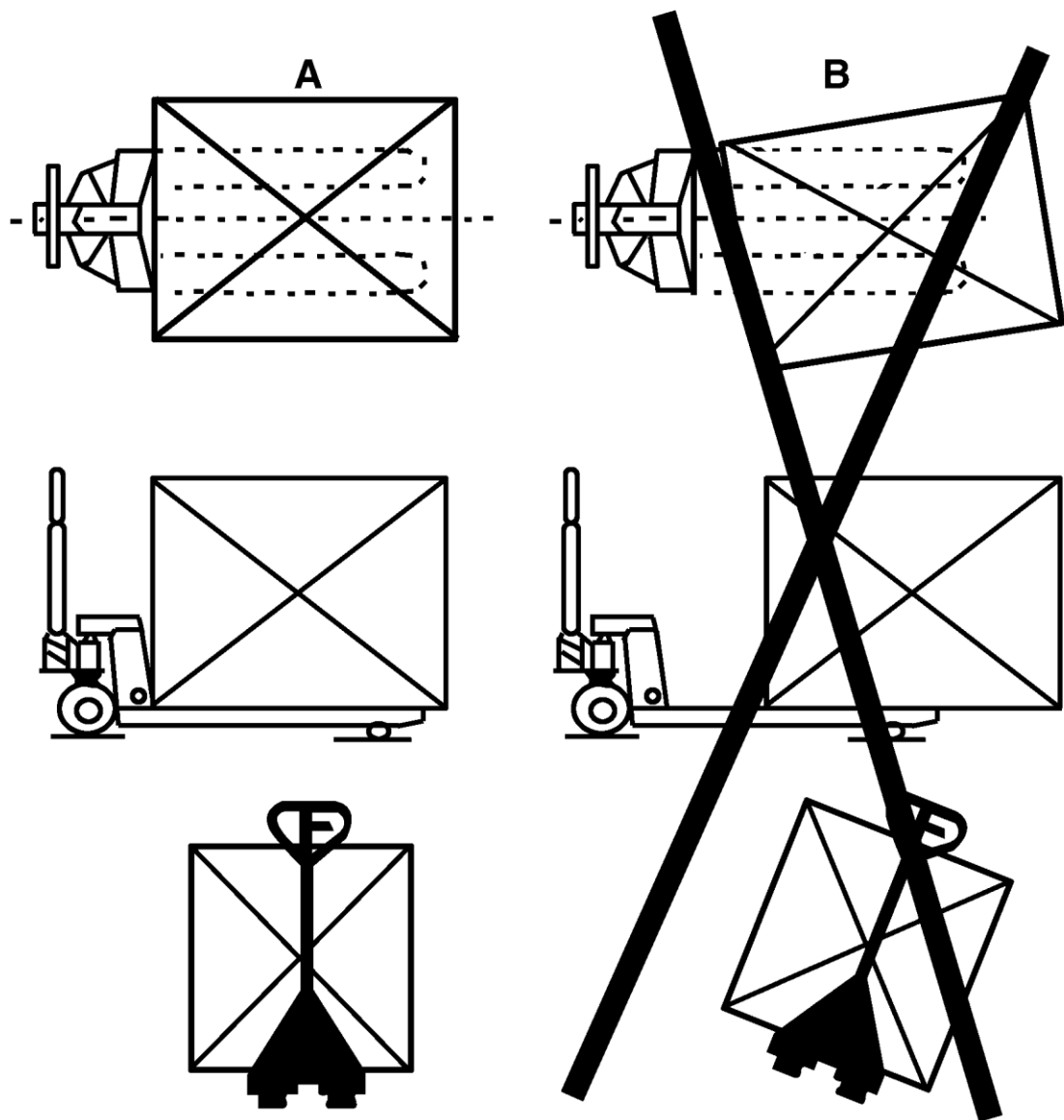
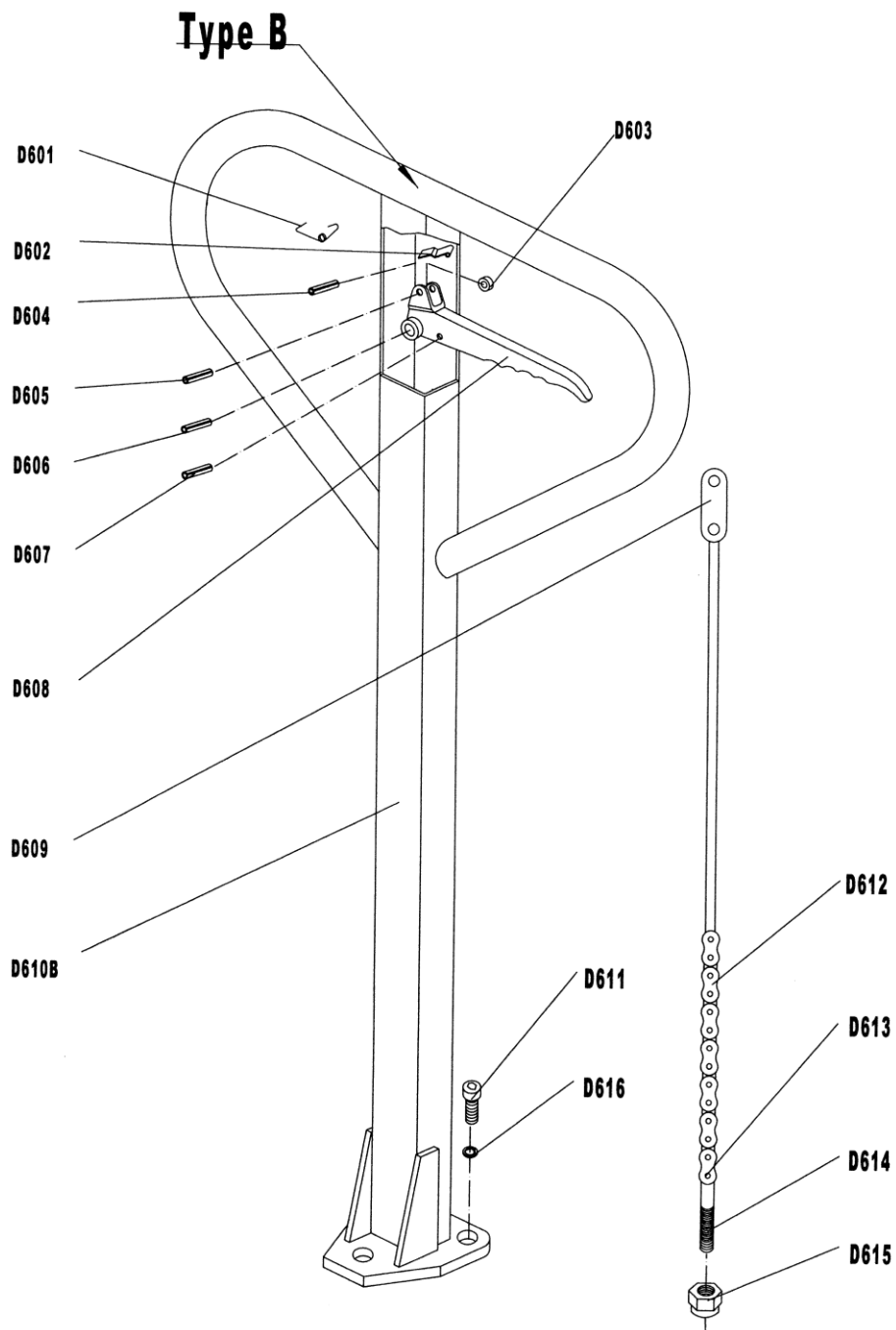


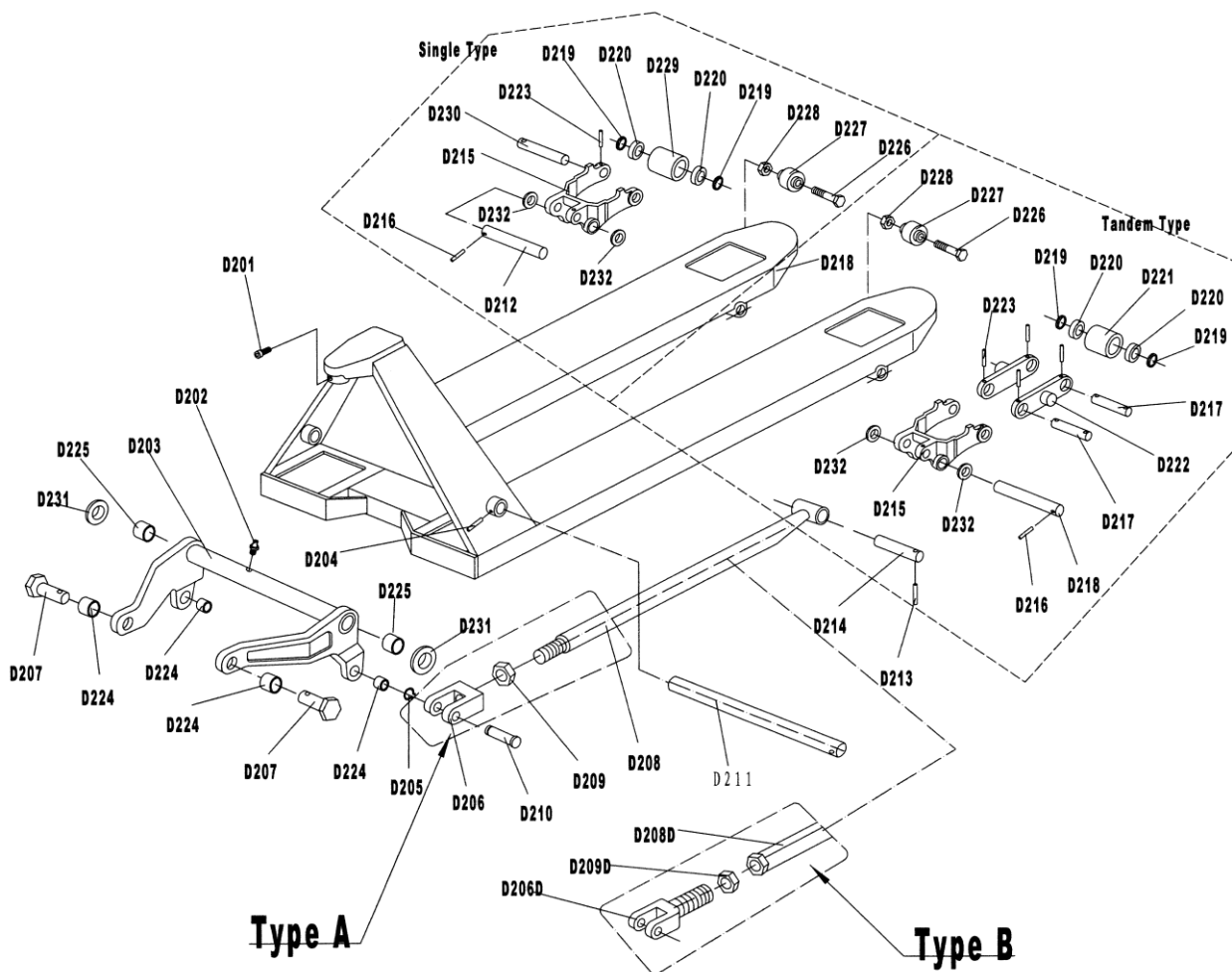
Fig.2





List of Handle

No.	Mobile Part #	Description	Qty.	Remark	No.	Mobile Part #	Description	Qty.	Remark
D601	ND601	Spring	1		D610A	ND610A	Handle (Shell)	1	For Type B
D602	ND602	Blade Spring	1		D611	ND611	Screw	3	
D603	ND603	Roller	1		D612	ND1214	Chain	1	
D604	ND604	Elastic Pin	1		D613		Pin	1	
D605	ND605	Elastic Pin	1		D614		Adjusting Bolt	1	
D606	ND606	Elastic Pin	1		D615	ND615	Adjusting Nut	1	
D607	ND607	Elastic Pin	1		D616	ND616	Elastic Washer	3	
D608	ND608	Control Handle	1		D402	ND402	Complete Handle Assy.	1	For Type B
D609	ND609	Pull Board	1						

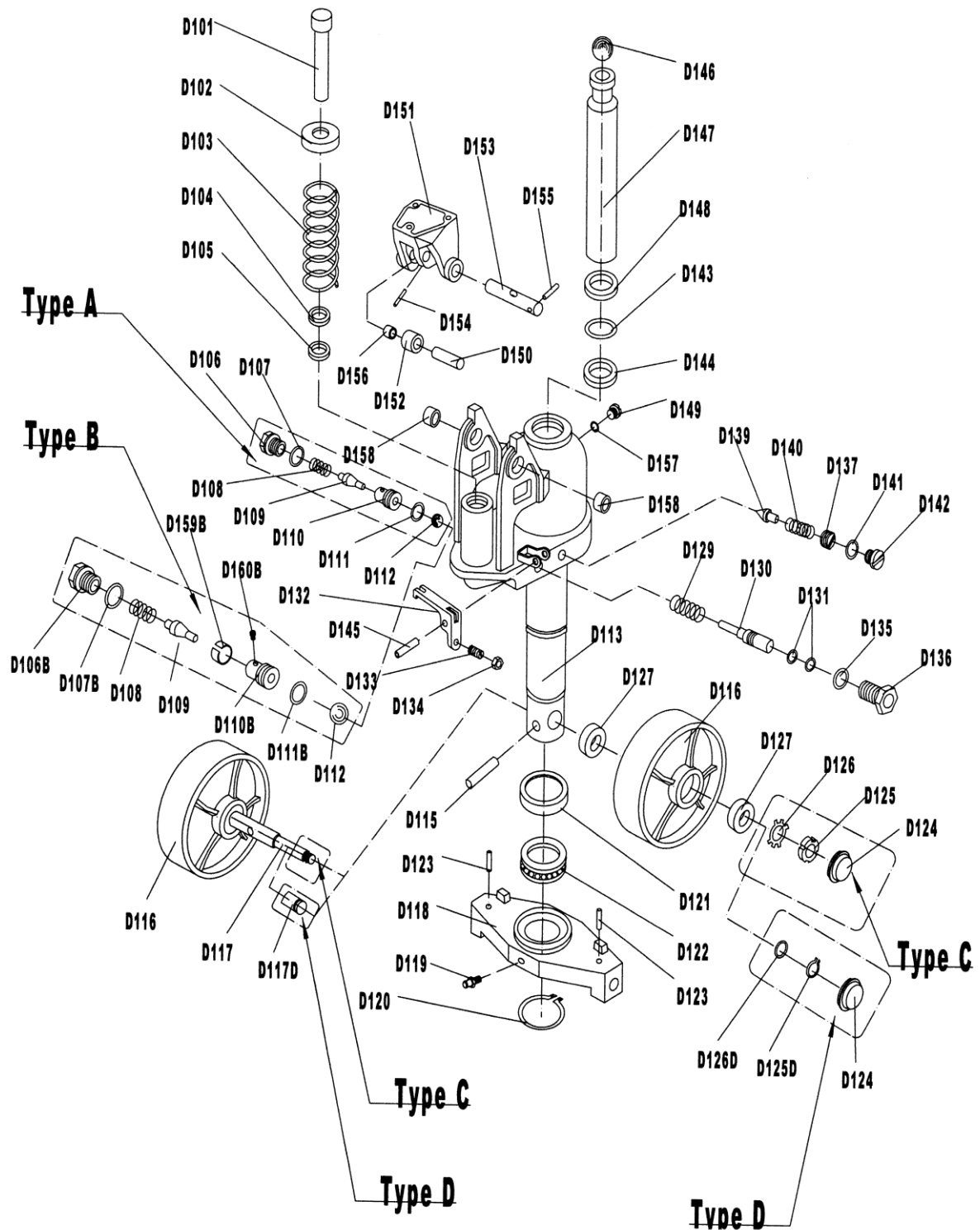


List of Fork Frame

No.	Mobile Part #	Description	Qty.	Remark	No.	Mobile Part #	Description	Qty.	Remark
D201	ND201	Screw	1		D216	ND216	Elastic Pin	2	
D202	ND202	Oil - holder	1		D217#	ND217#	Shaft for Roller	4	
D203B	ND203B	Rock – arm	1		D218	ND218	Fork Frame	1	
D204	ND204	Elastic Pin	1		D219	ND219	Washer	8 or 4	
D205	ND205	Retaining Ring	2		D220	ND220	Bearing	8 or 4	
D207	ND207	Shaft	2		D221#	ND221NT	Nylon Load Roller (Tandem)	4	
D206D	ND206D	Joint	2	ONLY for Type B	D221#	ND221PT	Polyurethane Load Roller (Tandem)	4	
D208D	ND208D	Pushing Rod	2		D222#	ND222#	Linking Plate	4	
D209D	ND209D	Nut	2		D223	ND223	Elastic Pin	8 or 2	
D210	ND210	Pin	2		D224	ND224	Bushing	4	
D211	ND211	Shaft	1	ONLY for Type B	D225	ND225	Bushing	2	
D212	ND212	Shaft	2		D226	ND226	Bolt	2	
D213	ND213	Elastic Pin	2		D227	ND227	Enter Roller	2	
D214	ND214	Shaft	2		D228	ND228	Nut	2	
D215	ND215	Frame of Roller	2		D229*	ND229NS	Nylon Load Roller (Single)	2	
					D229*	ND229PS	Polyurethane Load Roller (Single)	2	
					D230*	ND230	Shaft for Roller	2	
					D231	ND231	Washer	2	
					D232	ND232	Washer	4	

(Note # --For Tandem wheel, * --For single wheel)

PUMP



List of Pump Unit

No.	Mobile Part #	Description	Qty.	Remark
D101	ND101	Pump Piston Rod	1	
D102	ND102	Washer	1	
D103	ND103	Spring	1	
D104	ND104	Dust Ring	1	
D105	ND105	Y – Seal	1	
D108	ND108	Spring	1	

D109	ND109	Spindle of Pumping Valve	1	
D112	ND112	Steel Ball	1	
D106	ND106	Screw	1	Only for TYPE A
D107	ND107	O – Ring	1	
D110	ND110	Seat of Pumping Valve	1	
D111	ND111	O – Ring	1	
D106B	ND106B	Screw	1	Only for TYPE B
D107B	ND107B	O – Ring	1	
D110B	ND110B	Seat of Pumping Valve	1	
D111B	ND111B	O – Ring	1	
D159B	ND159B	Sleeve	1	
D160B	ND160B	Screw	1	
D113	ND113	Base of Pump	1	
D115	ND115	Elastic Pin	1	
D116	ND116	Steering Wheel	2	
D118	ND118	Thrust Plate	1	
D119	ND119	Oil – holder	1	
D120	ND120	Retaining Ring	1	
D121	ND121	Cover of Bearing	1	
D122	ND122	Bearing	1	
D123	ND123	Elastic Pin	2	
D124	ND124	Dust Cover	2	
D117	ND117	Shaft of Steering Wheel	1	Only for TYPE C
D125	ND125	Round Nut	2	
D126	ND126	Tab Washer	2	
D117	ND117	Shaft of Steering Wheel	1	Only for TYPE D
D125	ND125	Round Nut	2	
D126	ND126	Tab Washer	2	
D127	ND127	Bearing	4	
D129	ND129	Spring	1	
D130	ND130	Strike Pin	1	
D131	ND131	O – Ring	2	
D132	ND132	Lever Plat	1	
D133	ND133	Adjusting Screw	1	
D134	ND134	Nut	1	
D135	ND135	O – Ring	1	
D136	ND136	Axle Sleeve	1	
D137	ND137	Adjusting Bolt	1	
D139	ND139	Spindle of Safety Valve	1	
D140	ND140	Spring	1	
D141	ND141	O – Ring	1	
D142	ND142	Screw	1	
D143	ND143	O – Ring	1	
D144	ND144	Y – Seal	1	
D145	ND145	Elastic Pin	1	
D146	ND146	Steel Ball	1	
D147	ND147	Piston Rod	1	
D148	ND148	Dust Ring	1	
D149	ND149	Screw	1	
D150	ND150	Shaft	1	
D151	ND151	Bracket	1	
D152	ND152	Pressure Roller	1	
D153	ND153	Shaft	1	
D154	ND154	Elastic Pin	1	
D155	ND155	Elastic Pin	1	
D156	ND156	Bushing	1	
D157	ND157	Seal Washer	1	
D158	ND158	Bushing	2	
D405	ND405	Seal Kit	1	
D404	ND404	Complete Pump Assembly	1	



MOBILE INDUSTRIES, INC.
37508 Laird Rd - Unit 2 & 3
Mississauga ON, L5L 0R6
Canada

Toll Free: 1 800 527 4612 • Local 905 279 5370
Email: info@mobilept.com

MOBILEPT.COM