



OPERATING INSTRUCTIONS & PARTS BREAKDOWN

TELESCOPIC STACKERS

VERSION	N/A
MODEL	F SERIES
APPLICABLE PRODUCTS	FTAFC96 / FTAFC120 / FTAFC132 / FTAFC144

Please read and save these instructions. Read carefully before attempting to assemble, install, operate, or maintain the product described. Protect yourself and others by observing all safety information. Failure to comply with instructions could result in personal injury and/or property damage! Retain instructions for future reference.



The Mobile Stackers are lifting devices featuring easy, flexible, reliable and safe operation suitable for transportation of loads in such applications as warehouses, manufacturing facilities, storerooms and workshops, and require no special training or certification.

In order to help you use this piece of equipment correctly, please read the instruction manual carefully before operating. Unauthorized operation is forbidden. Failure to adhere to these points can result in damage to the truck and/or injury to the operator.

ATTENTION:

1. Overloading is not permitted. All operation should be conducted within the rated load capacity.
2. Never stand or sit on the stacker while in operation.
3. The operator should only operate the stacker while they are positioned behind the machine.
4. Do not operate the stacker if there are people in front of the unit.
5. Never put your hands, feet or any other part of your body underneath the frame, fork or platform assembly.
6. Make sure that loads are evenly distributed on the forks or platform. Do not concentrate loads at one point or load one fork more than the other. If the load is shorter than the forks or the platform, the load should always be placed at the back of the forks or the platform against the backrest. Never lift loads with only one fork, or with the tips of the forks or the platform as this may damage or tip the stacker.
7. Never move the truck while raising or lowering the forks or platform.
8. Do not allow your stacker to drop from one level to another. A drop of one inch more than doubles the load during impact which can result in bending or breaking components of the truck.
9. Always ensure that the load is stable and secure before moving to eliminate the possibility of load shifting.
10. When not in use, the forks or platform should be lowered to avoid potential injury.
11. The stacker is designed to be used on a flat and hard surface. Applying the brake is recommended for applications involving a slope.

OPERATION (Battery model):

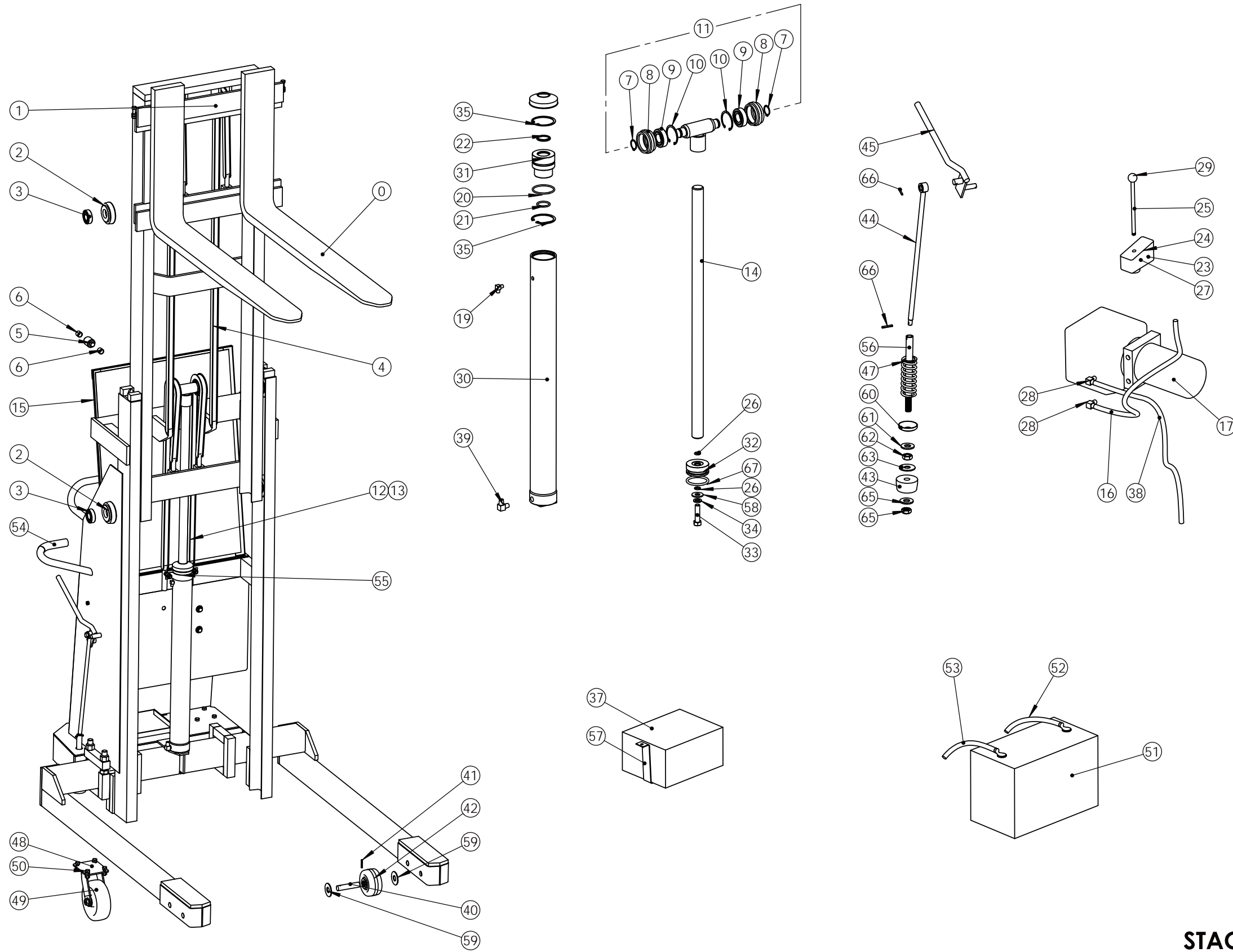
1. Push the control lever forward to raise the fork or platform assembly. Pull the handle backward to lower the fork or platform assembly.
2. Mobile stackers are manually propelled. Push or pull using the handles (or the optional 5th wheel assembly) to maneuver the unit. Ensure that the operator's feet are clear of the frame when moving the unit.
3. The battery should not be allowed to run down completely so Mobile Stackers are equipped with a 10 amp onboard charger. To recharge the battery simply plug the charger into any standard 110 volt outlet. The required charge time depends on the amount of usage. Normally a fully charged battery should offer 6 to 8 hours of operation time. Units used frequently can be plugged in overnight (to a maximum of 24 hours) to ensure battery levels. Units used sparingly may only need to be plugged in weekly for recharging. The charger has an overload protection feature to prevent damaging the battery.

MAINTENANCE:

1. **Lubrication:** It is recommended that a good grade of light grease should be applied to lubricate chain, rollers and wheels monthly. Wipe mast channels and apply light grease sparingly to inside surface.
2. **Hydraulic System:** Remove breather and check level of hydraulic oil with Stacker on level floor and in lowered position. Oil level should be 1" below top of the tank. If oil level is too high, it may cause oil to surge out of breather; if it is too low, it may prevent full lift of carriage and/or damage pump. For abnormal oil losses, check system for leaks as fittings may work loose. A slight creeping of the carriage without load can be accepted in any hydraulic cylinder.
3. **Electrical System:** Check connections as loose connections are the principal cause of electrical problems.
4. Use premium HVI hydraulic oil or equal (Recommended: AW32 Standard Hydraulic Oil). Other oils, fluids or solvents may damage the hydraulic system.

TROUBLESHOOTING:

CONDITION	CHECK POINT	ACTION
Motor does not run	Battery	Possible shorted cell or discharged battery
	Battery cables	All connections must be tight and free of corrosion
	Solenoid switch	Use jumper cable to bypass solenoid. If motor runs, solenoid is defective and needs replacing
	Loose wires	Check other wire connections
Ammeter jumps back and forth	All above points	Battery in backwards
	Circuit breaker on charger	Check all point
Motor runs - will not raise or hold position	Release valve rod in pump	Be sure rod is not binding. Remove from pump and allow oil to drain from port to flush possible dirt from pump.
	Check oil level in reservoir	If low, fill to capacity - 1" from filler hole
Motor keeps running	Starting Switch	Replace
		Tap solenoid switch lightly on side to release contact wire
Carriage lowers too slowly	Rollers in mast	Check for binding
Carriage will not raise	Pump valve assembly	Remove assembly and let oil drain from unit to flush the opening. Reassemble.
Carriage will not lower	Release plunger	Adjust valve screen.



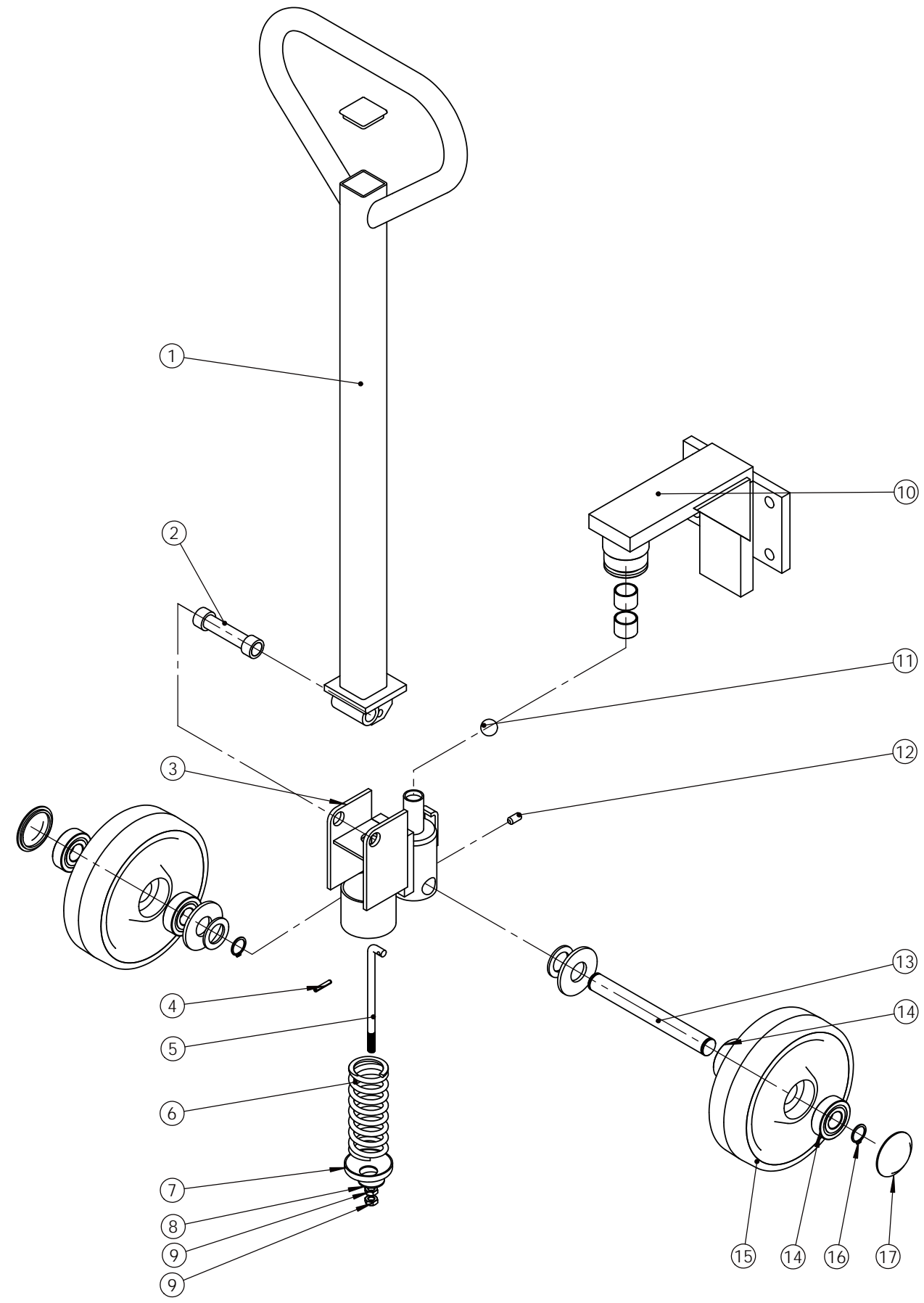
ITEM NO.	PART NO.	DESCRIPTION
0	2000T	ADJUSTABLE FORKS
1	2001T	CARRIAGE ASSEMBLY
2	2002T	ROLLER-MAST
3	2003T	BALL BEARING-ROLLER
4	2004T	CHAIN-PULLEY (SPECIFY MODEL)
5	2005T	GUIDE ROLLER
6	2006T	BUSHING
7	2007T	LOCKING RING
8	2008T	PULLEY
9	2009T	BALL BEARING-PULLEY
10	2010T	RETAINING RING
11	2011T	YOKE ASSEMBLY
12	2012T	CHAIN (SPECIFY MODEL)
13	2013T	CHAIN CONNECTING LINK
14	2014T	PISTON ROD (SPECIFY MODEL)
15	2015T	SAFETY SCREEN
16	1027	HOSE ASSY L.P. (SPECIFY MODEL)
17	1061	POWER PACK ASSEMBLY
18	1063	BARB FITTING
10	1026	ELBOW, 90°
70	2020T	O-RING
21	1016	O-RING
22	1014	WIPER
23	1055	BRACKET-STARTER SWITCH
24	1049	STARTER SWITCH
25	1050	CONTROL LEVER
26	1067	O-RING
27	1057	HANDLE RETURN SPRING
28	1060	ELBOW, 90°
29	1042	HAND GRIP - CONTROL LEVER
30	2030T	CYLINDER (SPECIFY MODEL)
31	2031T	TOP BEARING
32	2032T	PISTON
33	2033T	HEX CAP SCREW - PISTON
34	1021	LOCK WASHER
35	2035T	LOCK RING - TOP BEARING
36	2036T	PACKING KIT - LIFT CYLINDER
37	1043	BATTERY CHARGER
38	1026	HOSE ASSY H.P.
39	1029	ELBOW - LIFT CYLINDER
40	1012	AXLE
41	1011	LOCKING PIN
42	1013	4" WHEEL
43	1004	BRAKE PAD
44	1040	BRAKE ROD
45	1054	BRAKE LEVER
46	1053	HAND GRIP - BRAKE LEVER
47	1002	SPRING - BRAKE (SPECIFY MODEL)
48	2048T	CASTER ASSEMBLY
40	2049T	WHEEL - 6" STEEL, PHENOLIC, OR URETHANE
50	2050T	BOLT - CASTER
51	2051T	BATTERY
52	1044	CABLE - NEGATIVE
53	1045	CABLE - POSITIVE
54	1052	HAND GRIP
55	2055T	CLAMP - CYLINDER
56	1009	THREADED ROD (SPECIFY MODEL)
57	1062	MOUNTING BRACKET - CHARGER
58	2058T	WASHER
59	2059T	WASHER
60	1066	CAP
61	1070	WASHER
62	1071	NUT
63	1003	WASHER
64	1072	WASHER
65	1073	LOCK NUT
66	1066	LOCKING PIN
67	2067T	O-RING

**STANDARD PARTS LIST
STACKER MODELS - FTAF96 / 120 / 132 144**



ITEM NO.	PART NO.	DESCRIPTION
1	2060T	FIFTH WHEEL HANDLE
2	2061T	PIN
3	2068T	HOLDER
4	2064T	SPRING PIN
5	2065T	BRACKET ROD
6	3021	SPRING
7	2052	COVER
8	2066T	WASHER
9	2067T	NUT
10	2062T	BRACKET
11	1997	STEEL BALL
12	2053	SETSCREW
13	104-1	AXLE
14	210-1	BEARING
15	105	WHEEL
16	2050-1	LOCK RING
17	911	HUB CAP

**STANDARD PARTS LIST - FIFTH WHEEL ASSEMBLY
STACKER MODELS - FTAFC96 / 120 / 132 144**





MOBILE INDUSTRIES, INC.
3750B Laird Rd - Unit 2 & 3
Mississauga ON, L5L 0A6
Canada

Toll Free: 1 800 527 4612 • Local 905 279 5370
Email: info@mobilept.com

MOBILEPT.COM