

## PARTS BREAKDOWN

# ECO SCISSOR LIFT

---

**VERSION**  
**MODEL**  
**APPLICABLE PRODUCTS**

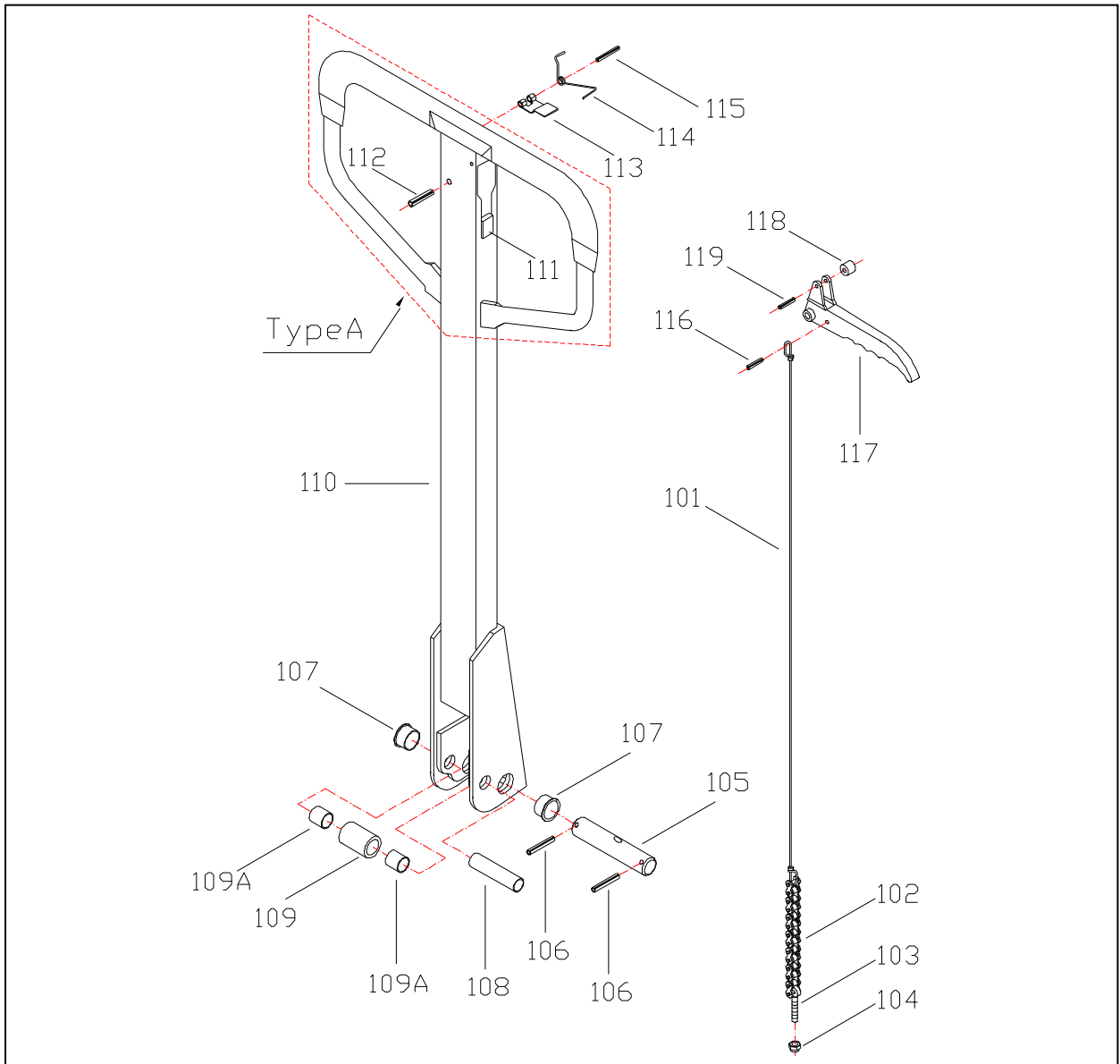
APRIL 2014  
EMSL22N MANUAL PUMP SCISSOR LIFT | EBSL22N BATTERY OPERATED SCISSOR LIFT  
EMSL22N, EBSL22N

---

# Catalogue

<b>Fig. 1 Handle of EMSL22N .....</b>	<b>3</b>
<b>Fig. 2 Handle of EBSL22N.....</b>	<b>5</b>
<b>Fig. 4 Frame of EMSL22N .....</b>	<b>9</b>
<b>Fig. 5 Frame of EBSL22N.....</b>	<b>11</b>
<b>Fig. 6 Pump of EMSL22N .....</b>	<b>11</b>
<b>Fig. 7 Pump of EBSL22N (1900).....</b>	<b>14</b>
<b>Fig. 9 External Charger of EBSL22N .....</b>	<b>16</b>

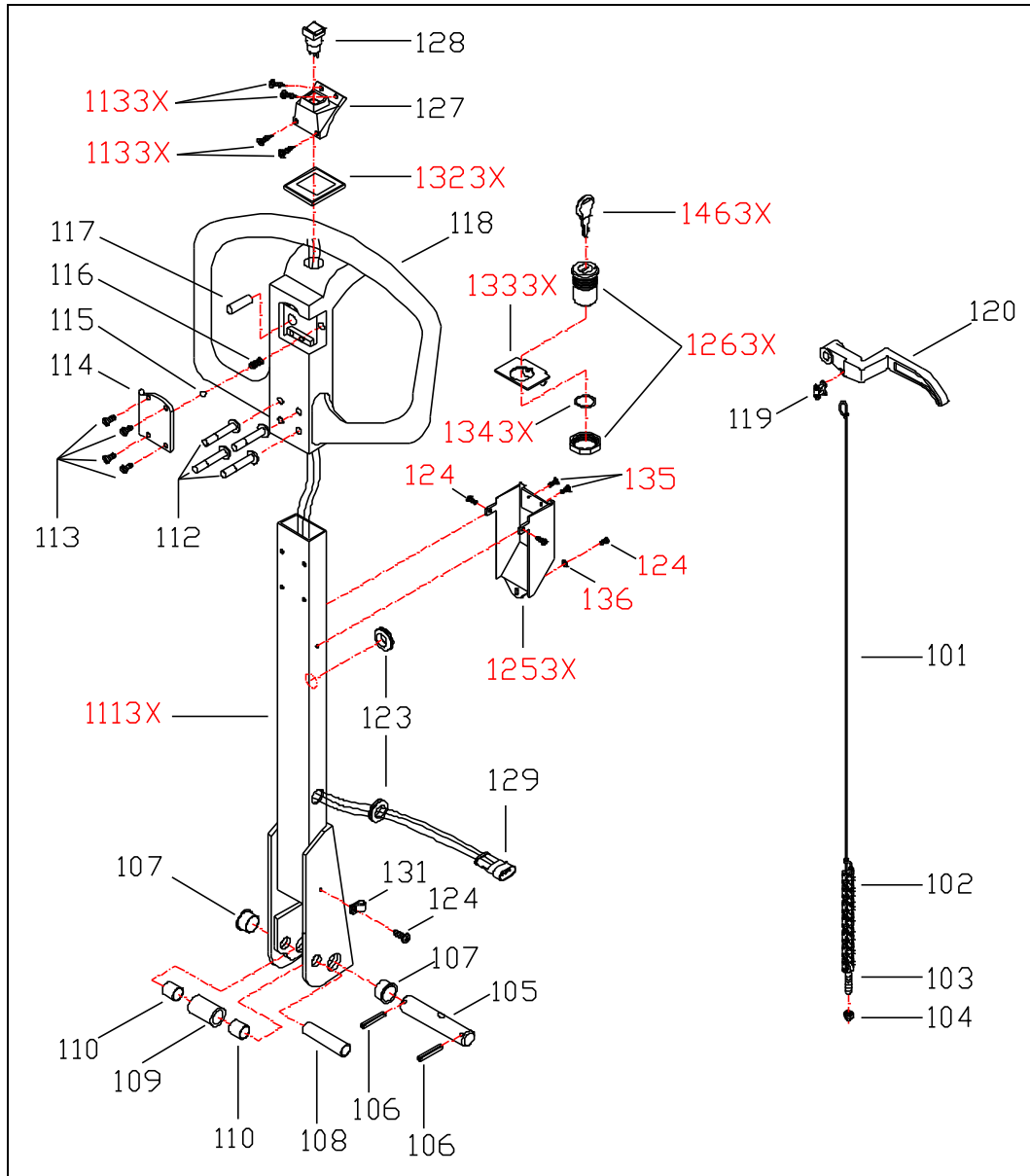
**Fig. 1 Handle of EMSL22N**



**Fig.1 Handle of EMSL22N**

<b>No.</b>	<b>Mobile Part #</b>	<b>Description</b>	<b>Qty.</b>	<b>Remark</b>
101	EMSLH-101	Release Rod	1	
102	EMSLH-102	Chain	1	
103	EMSLH-103	Adjusting Bolt	1	
104	EMSLH-104	Adjusting Nut	1	
105	EMSLH-105	Axle with Hole	1	
106	EMSLH-106	Elastic Pin	2	
107	EMSLH-107	Bushing	2	
108	EMSLH-108	Roller Pin	1	
109	EMSLH-109	Pressure Roller	1	
109A	EMSLH-109A	Bushing	2	
110	EMSLH-110	Draw-bar	1	Type A
111	EMSLH-111	Stop Rubber	1	
112	EMSLH-112	Elastic Pin	1	
113	EMSLH-113	Blade Spring	1	
114	EMSLH-114	Spring	1	
115	EMSLH-115	Elastic Pin	1	
116	EMSLH-116	Elastic Pin	1	
117	EMSLH-117	Control Handle	1	
118	EMSLH-118	Roller	1	
119	EMSLH-119	Elastic Pin	1	
1001M-A	EMSLH-1001M-A	Complete Handle Assembly (Contains:101, 102, 103, 104, 105, 106, 107, 108, 109, 109A, 110, 111, 112, 113, 114, 115, 116, 117, 118, 119)		

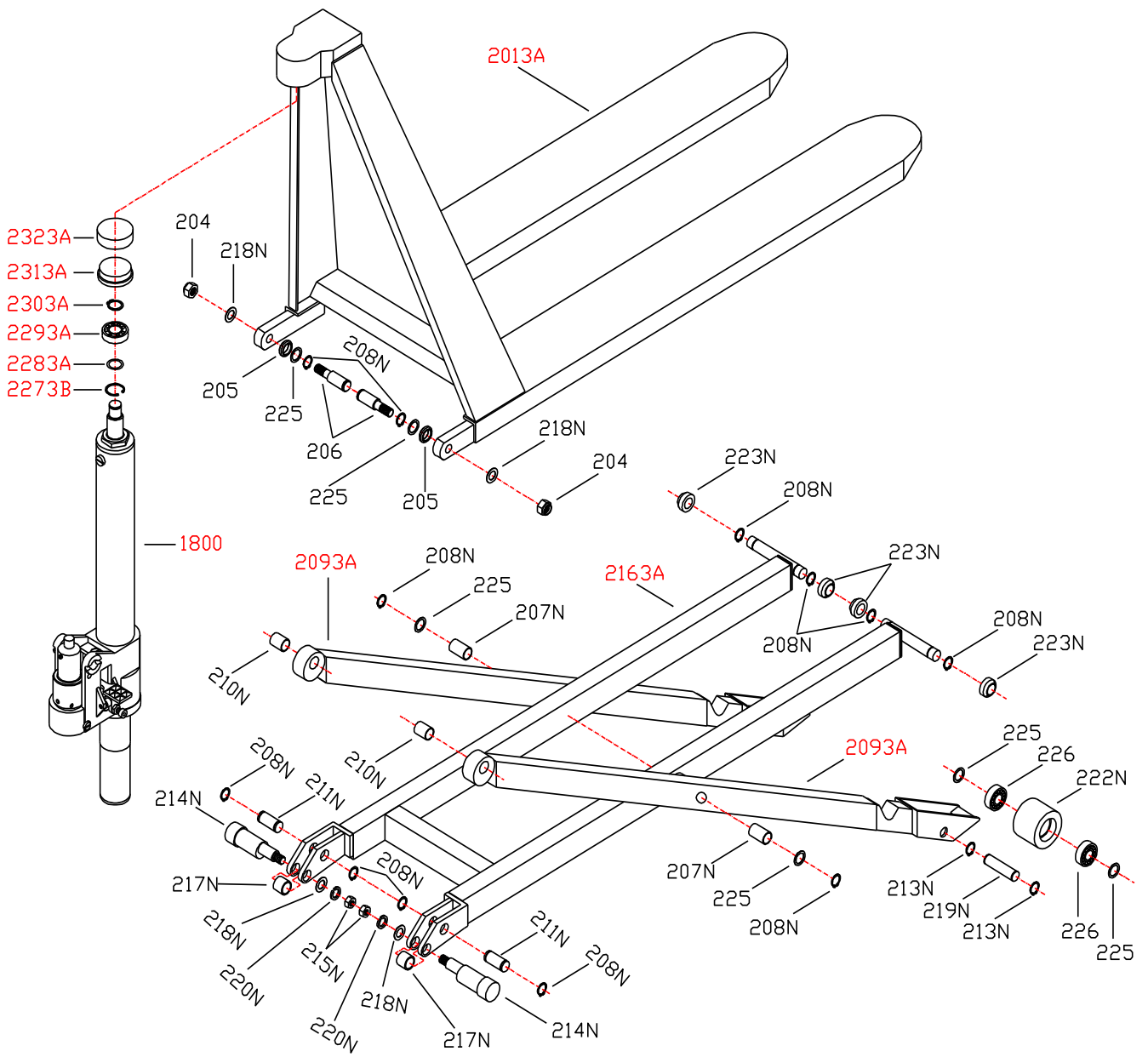
Fig. 2 Handle of EBSL22N



**Fig. 2 Handle of EBSL22N**

<b>No.</b>	<b>Mobile Part #</b>	<b>Description</b>	<b>Qty</b>
101	EBSLH-101	Release Rod	1
102	EBSLH-102	Chain	1
103	EBSLH-103	Adjusting Bolt	1
104	EBSLH-104	Adjusting Nut	1
105	EBSLH-105	Axle with Hole	1
106	EBSLH-106	Elastic Pin	2
107	EBSLH-107	Bushing	2
108	EBSLH-108	Roller Pin	1
109	EBSLH-109	Pressure Roller	1
110	EBSLH-110	Bushing	1
1113X	EBSLH-1113X	Draw - bar	1
112	EBSLH-112	Pin	4
113	EBSLH-113	Screw	4
1133X	EBSLH-1133X	Screw	4
114	EBSLH-114	Cover	1
115	EBSLH-115	Ball	1
116	EBSLH-116	Spring	1
117	EBSLH-117	Pin	1
118	EBSLH-118	Handle	1
119	EBSLH-119	Pin	1
120	EBSLH-120	Controlling Handle	1
123	EBSLH-123	Rubber band	2
124	EBSLH-124	Screw	4
1253X	EBSLH-1253X	Cover	1
1263X	EBSLH-1263X	Switch	1
127	EBSLH-127	Socket of button	1
128	EBSLH-128	Button	1
129	EBSLH-129	Connector plug	1
131	EBSLH-131	Nylon Clips	1
1323X	EBSLH-1323X	Rubber Packing	1
1333X	EBSLH-1333X	Socket of switch	1
1343X	EBSLH-1343X	O - Ring	1
135	EBSLH-135	Screw	2
136	EBSLH-136	Gasket	1
1463X	EBSLH-1463X	Key	2

**Fig. 4 Frame of EMSL22N**

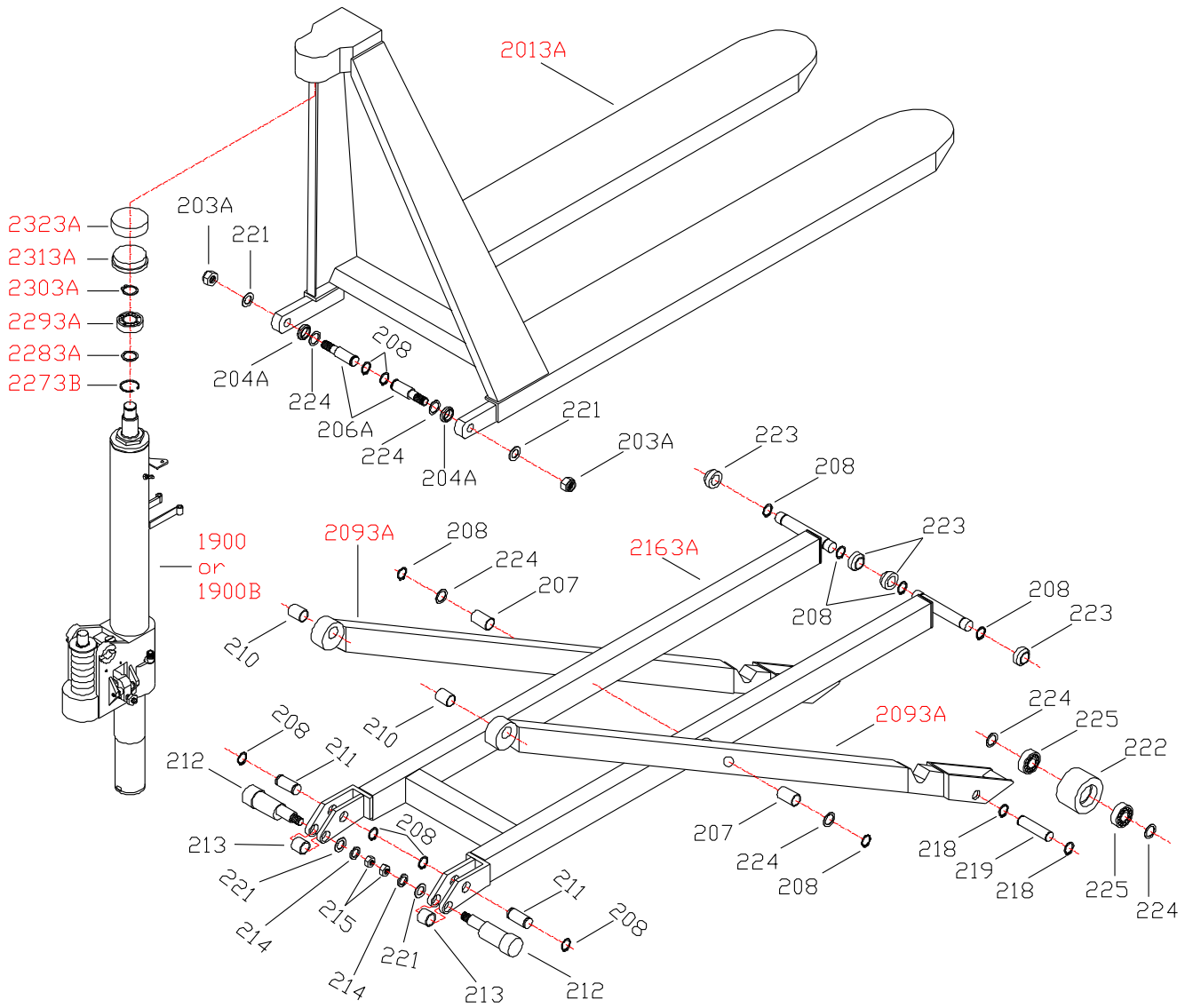


**Fig.4 Frame of EMSL22N**

<b>No.</b>	<b>Mobile Part #</b>	<b>Description</b>	<b>Qty</b>	<b>Annotations</b>
204	EMSLF-204	Nut	2	
205	EMSLF-205	Washer	2	
206	EMSLF-206	Pin	2	
225	EMSLF-225	Washer	6	
226	EMSLF-226	Bearing	4	
2013A	EMSLF-2013A	Fork Frame	1	
207N	EMSLF-207N	Bushing	2	
208N	EMSLF-208N	Elastic collar	12	
2093A	EMSLF-2093A	Lift Leg	2	
210N	EMSLF-210N	Bushing	2	
211N	EMSLF-211N	Pin	2	
213N	EMSLF-213N	Locking Ring	4	
214N	EMSLF-214N	Centrifugal Axle	2	
215N	EMSLF-215N	Locking Nut	2	
2163A	EMSLF-2163A	Inner Leg	1	
217N	EMSLF-217N	Bushing	2	
218N	EMSLF-218N	Washer	4	
219N	EMSLF-219N	Shaft of Roller	2	
220N	EMSLF-220N	Elastic Washer	2	
222N	EMSLF-222N	Roller	2	
223N	EMSLF-223N	Steel Roller	4	
2273B	EMSLF-22273B	Retain Ring 72 For Bore	1	From 08140400001
2283A	EMSLF-2283A	Washer	1	
2293A	EMSLF-2293A	Ball Bearing	1	
2303A	EMSLF-2303A	Circlip for Shaft	1	
2313A	EMSLF-2313A	Seat of Bearing	1	
2323A	EMSLF-2323A	Rubber cover	1	
1800	EMSLF-1800	Pump unit		



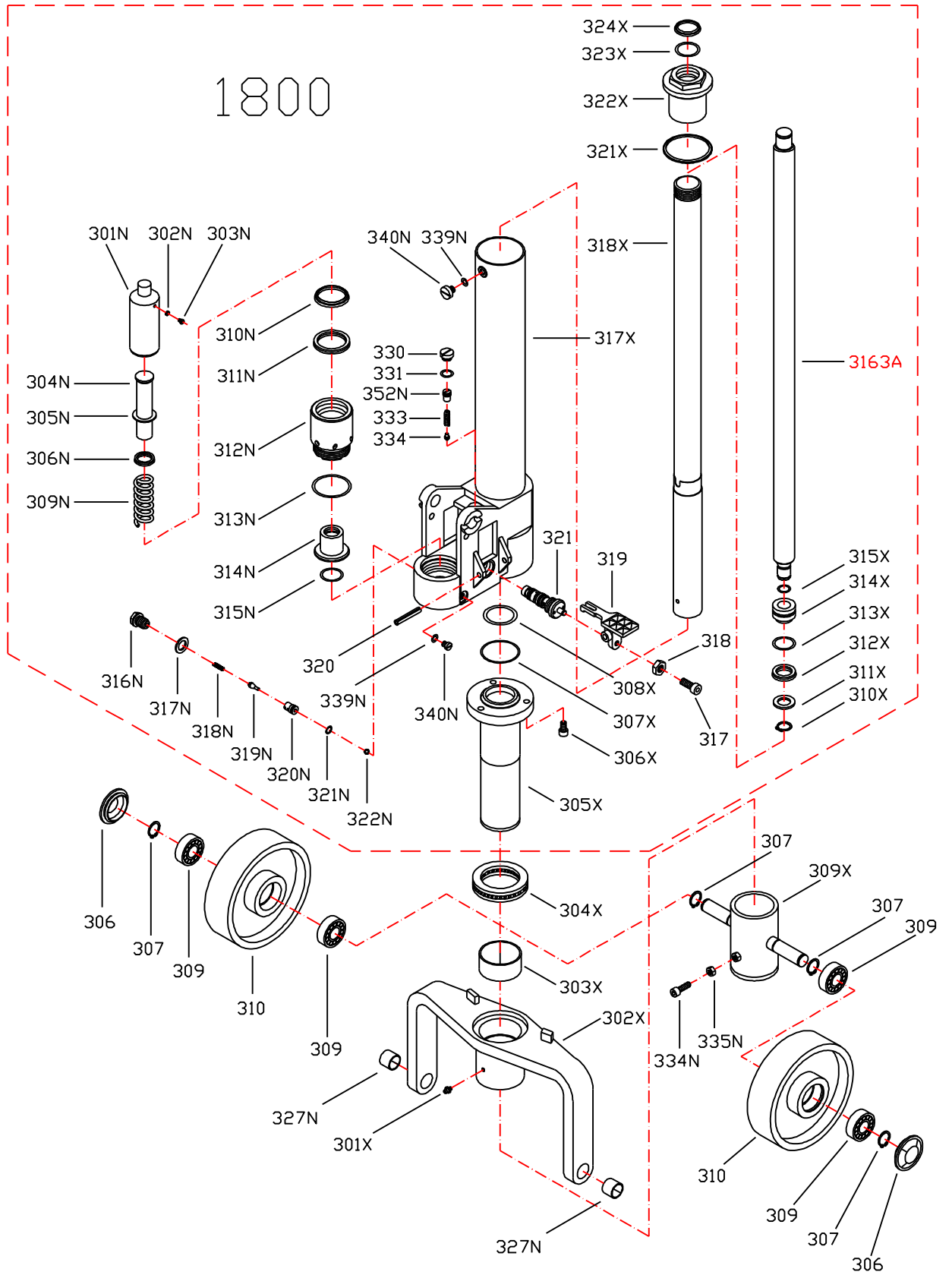
**Fig. 5 Frame of EBSL22N**



**Fig. 5 Frame of EBSL22N**

<b>No.</b>	<b>Mobile Part #</b>	<b>Description</b>	<b>Qty</b>	<b>Annotations</b>
2013A	EBSLF-2013A	Fork Frame	1	
203A	EBSLF-203A	Locknut	2	
204A	EBSLF-204A	Gasket	2	
206A	EBSLF-206A	Pin	2	
207	EBSLF-207	Bushing	2	
208	EBSLF-208	Elastic collar	12	
2093A	EBSLF-2093A	Lift Leg	2	
210	EBSLF-210	Bushing	2	
211	EBSLF-211	Pin	2	
212	EBSLF-212	Centrifugal Axle	2	
213	EBSLF-213	Bushing	2	
214	EBSLF-214	Elastomeric gasket	2	
215	EBSLF-215	Nut	2	
2163A	EBSLF-2163A	Inner Leg	1	
218	EBSLF-218	Elastic collar	4	
219	EBSLF-219	Shaft of Roller	2	
221	EBSLF-221	Gasket	4	
222	EBSLF-222	Roller	2	
223	EBSLF-223	Steel Roller	4	
224	EBSLF-224	Gasket	8	
225	EBSLF-225	Bearing	4	
2273B	EBSLF-2273B	Retain Ring 72 For Bore	1	From 08140400001
2283A	EBSLF-2283A	Washer	1	
2293A	EBSLF-2293A	Ball Bearing	1	
2303A	EBSLF-2303A	Circlip for Shaft	1	
2313A	EBSLF-2313A	Seat of Bearing	1	
2323A	EBSLF-2323A	Rubber cover	1	
1900	EBSLF-1900	Pump Assembly	1	

Fig. 6 Pump of EMSL22N

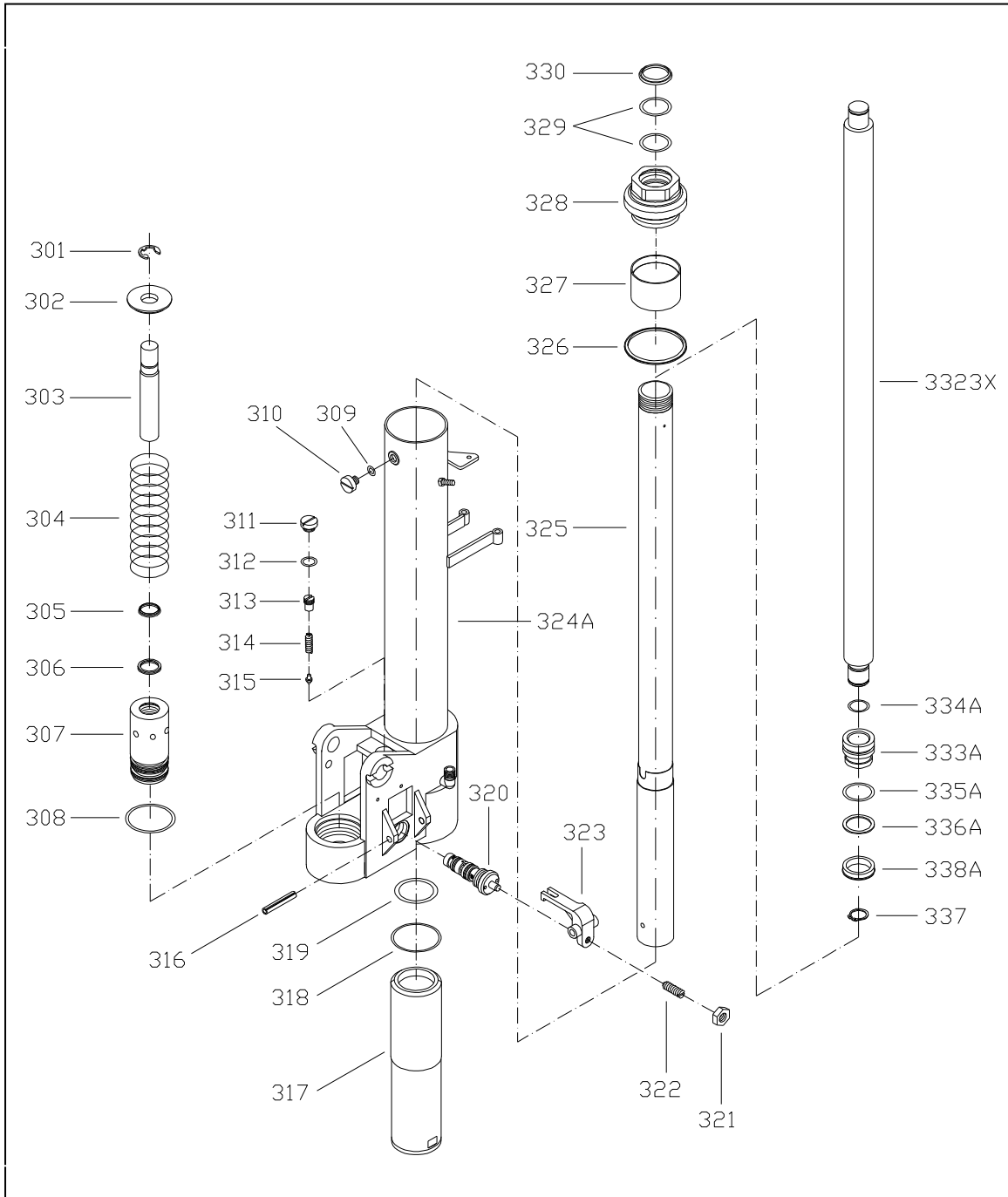


**Fig.6 Pump of EMSL22N**

<b>No.</b>	<b>Mobile Part #</b>	<b>Description</b>	<b>Qty</b>	<b>Annotations</b>
306	EMSLP-306	Dust Cover	2	
307	EMSLP-307	Locking Ring	4	
309	EMSLP-309	Bearing	4	
310	EMSLP-310	Steering Wheel	2	
317	EMSLP-317	Screw	1	
318	EMSLP-318	Nut	1	
319	EMSLP-319	Lever Plate	1	
320	EMSLP-320	Elastic Pin	1	
321	EMSLP-321	Valve Cartridge	1	
330	EMSLP-330	Screw Plug	1	
331	EMSLP-331	O - Ring	1	
333	EMSLP-333	Spring	1	
334	EMSLP-334	Spindle of Safety Valve	1	
301N	EMSLP-301N	Piston for Quick Lifting	1	
302N	EMSLP-302N	Seal Washer	1	
303N	EMSLP-303N	Screw for Deflating	1	
304N	EMSLP-304N	Piston for Slow Lifting	1	
305N	EMSLP-305N	Washer for Spring	1	
306N	EMSLP-306N	Y - Ring	1	
309N	EMSLP-309N	Spring	1	
310N	EMSLP-310N	Dust Ring	1	
311N	EMSLP-311N	Y - Ring	1	
312N	EMSLP-312N	Pump Cylinder for Quick Lifting	1	
313N	EMSLP-313N	O – Ring	1	
314N	EMSLP-314N	Pump Cylinder for Slow Lifting	1	
315N	EMSLP-315N	O - Ring	1	
316N	EMSLP-316N	Screw	1	
317N	EMSLP-317N	Seal Washer	1	
318N	EMSLP-318N	Spring	1	
319N	EMSLP-319N	Spindle of Pump Valve	1	
320N	EMSLP-320N	Seat of Valve	1	
321N	EMSLP-321N	O - Ring	1	
322N	EMSLP-322N	Steel Ball	1	
327N	EMSLP-327N	Bushing	2	
334N	EMSLP-334N	Screw	1	
335N	EMSLP-335N	Nut	1	

No.		Description	Qty	Annotations
339N	EMSLP-339N	O - Ring	2	
340N	EMSLP-340N	Screw	2	
352N	EMSLP-352N	Adjusting Bolt	1	
301X	EMSLP-301X	Grease Cup	1	
302X	EMSLP-302X	Thrust Plate	1	
303X	EMSLP-303X	Bushing	1	
304X	EMSLP-304X	Bearing	1	
305X	EMSLP-305X	Lower Cylinder	1	
306X	EMSLP-306X	Screw	3	
307X	EMSLP-307X	O - Ring	1	
308X	EMSLP-308X	O - Ring	1	
309X	EMSLP-309X	Holding Site for Wheel	1	
310X	EMSLP-310X	Locking Ring	1	
311X	EMSLP-311X	Washer	1	
312X	EMSLP-312X	Y - Ring	1	
313X	EMSLP-313X	O - Ring	1	
314X	EMSLP-314X	Piston	1	
315X	EMSLP-315X	O - Ring	1	
3163A	EMSLP-3163A	Piston Rod	1	
317X	EMSLP-317X	Pump Body	1	
318X	EMSLP-318X	Cylinder	1	
321X	EMSLP-321X	Seal Washer	1	
322X	EMSLP-322X	Screw Cover	1	
323X	EMSLP-323X	O - Ring	1	
324X	EMSLP-324X	Dust Ring	1	
NV-X	EMSLP-NV-X	Seal Kit Ass'y	Contains: 331, 302N, 306N, 310N, 311N, 313N, 315N, 317, 321N, 339N, 307X, 308X, 312X, 313X, 315X, 321X, 323X, 324X	

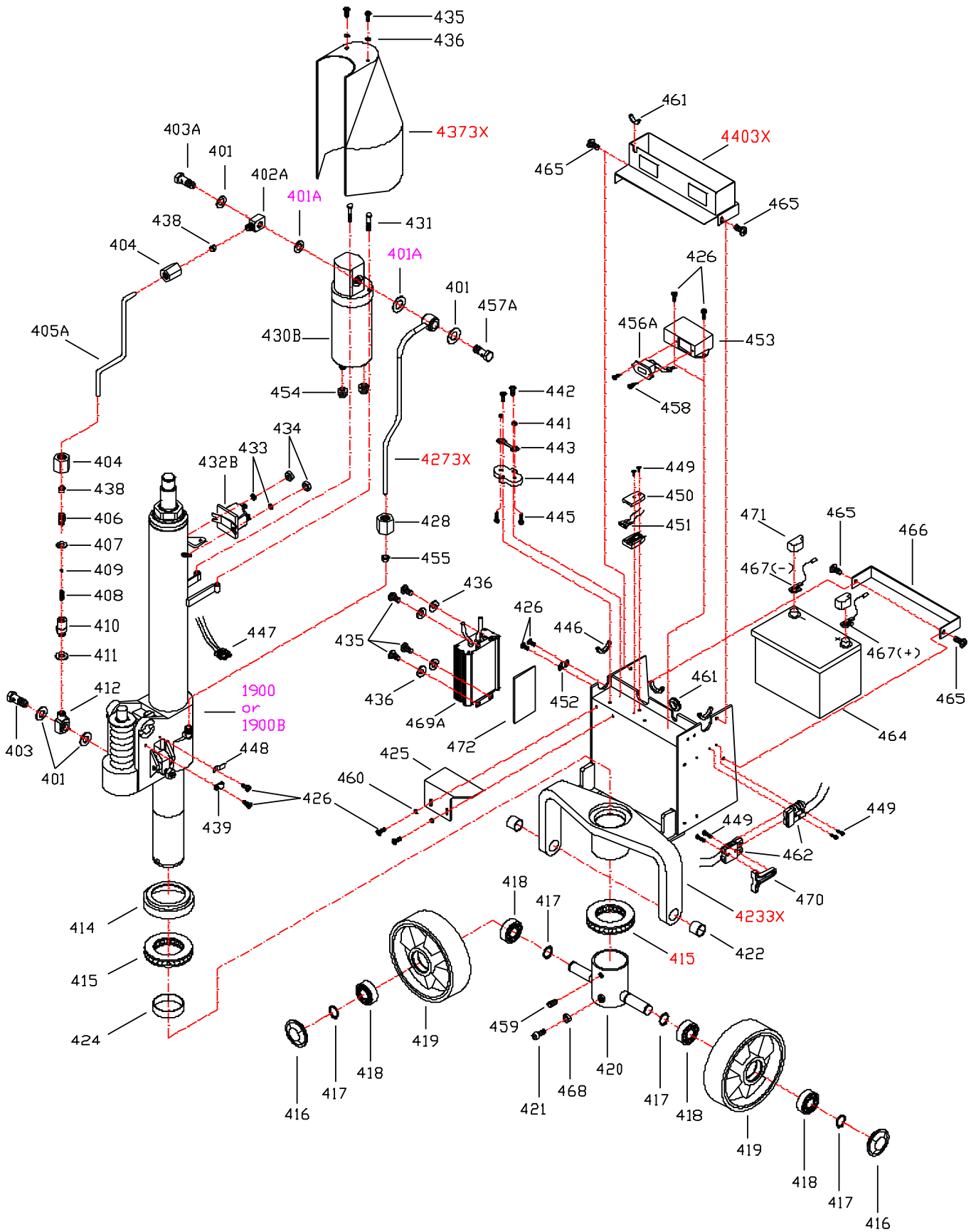
Fig. 7 Pump of EBSL22N



**Fig. 7 Pump of EBSL22N**

<b>No.</b>	<b>Mobile Part #</b>	<b>Description</b>	<b>Qty</b>
301	EBSLP-301	Locking Ring	1
302	EBSLP-302	Gasket for Spring	1
303	EBSLP-303	Piston	1
304	EBSLP-304	Spring	1
305	EBSLP-305	Dust Ring	1
306	EBSLP-306	Y - Ring	1
307	EBSLP-307	Pump Cylinder	1
308	EBSLP-308	O - Ring	1
309	EBSLP-309	Seal Gasket	1
310	EBSLP-310	Screw Plug	1
311	EBSLP-311	Screw Plug	1
312	EBSLP-312	O - Ring	1
313	EBSLP-313	Adjusting Bolt	1
314	EBSLP-314	Spring	1
315	EBSLP-315	Spindle of Safety Valve	1
316	EBSLP-316	Elastic Pin	1
317	EBSLP-317	Lower Cylinder	1
318	EBSLP-318	O - Ring	1
319	EBSLP-319	O - Ring	1
320	EBSLP-320	Valve Cartridge	1
321	EBSLP-321	Nut	1
322	EBSLP-322	Screw	1
323	EBSLP-323	Lever Plate	1
324A	EBSLP-324A	Pump Body	1
325	EBSLP-325	Cylinder	1
326	EBSLP-326	Seal Gasket	1
327	EBSLP-327	Bushing	1
328	EBSLP-328	Screw Cover	1
329	EBSLP-329	O - Ring	1
330	EBSLP-330	Dust Ring	1
3323X	EBSLP-3323X	Piston Rod	1
333A	EBSLP-333A	Piston	1
334A	EBSLP-334A	O - Ring	1
335A	EBSLP-335A	O - Ring	1
336A	EBSLP-336A	Gasket	1
337	EBSLP-337	Elastic collar	1
338A	EBSLP-338A	Y - Ring	1

Fig. 9 External Charger of EBSL22N





**Fig. 9 External Charger of EBSL22N**

No.	Mobile Part #	Description	Qty	No.	Mobile Part #	Description	Qty	
401	EBSLEC-401	Seal Gasket	4	438	EBSLEC-438	Sheath	2	
402A	EBSLEC-402A	Connector	1	439	EBSLEC-439	Nylon Clips	1	
403A	EBSLEC-403A	Bolt	1	4403X	EBSLEC-43403X	Battery Cover	1	
403	EBSLEC-403	Bolt	1	441	EBSLEC-441	Nut	2	
404	EBSLEC-404	Nut	2	442	EBSLEC-442	Screw	2	
405A	EBSLEC-405A	Oil Pipe	1	443	EBSLEC-443	Fuse	1	
406	EBSLEC-406	Carve Tie-in	1	444	EBSLEC-444	Fuse Carrier	1	
407	EBSLEC-407	Seal Gasket	1	445	EBSLEC-445	Bolt	2	
408	EBSLEC-408	Spring	1	446	EBSLEC-446	Rubber band	2	
409	EBSLEC-409	Steel Ball	1	447	EBSLEC-447	Connector plug	1	
410	EBSLEC-410	Seat of Valve	1	448	EBSLEC-448	Metal sheet	1	
411	EBSLEC-411	Seal Gasket	1	449	EBSLEC-449	Screw	6	
412	EBSLEC-412	Connector	1	450	EBSLEC-450	Fuse Carrier	2	
414	EBSLEC-414	Seat of Bearing	1	451	EBSLEC-451	Fuse	1	
415	EBSLEC-415	Bearing	2	452	EBSLEC-452	Wire Clip	1	
416	EBSLEC-416	Dust Cover	2	453	EBSLEC-453	Seat of Voltage Meter	1	
417	EBSLEC-417	Elastic collar	4	454	EBSLEC-454	Rubber Sheath	2	
418	EBSLEC-418	Bearing	4	455	EBSLEC-455	Sheath	1	
419	EBSLEC-419	Wheel	2	456A	EBSLEC-456A	Circuit Module	1	
420	EBSLEC-420	Holding Site for Wheel	1	457A	EBSLEC-457A	Bolt	1	
421	EBSLEC-421	Bolt	1	458	EBSLEC-458	Screw	2	
422	EBSLEC-422	Bushing	2	459	EBSLEC-459	Screw	3	
4233X	EBSLEC-4233X	Thrust Plate	1	460	EBSLEC-460	Gasket	2	
424	EBSLEC-424	Bushing	1	461	EBSLEC-461	Rubber band	2	
425	EBSLEC-425	Cover	1	462	EBSLEC-462	Socket	2	
426	EBSLEC-426	Screw	8	464	EBSLEC-464	Battery	1	
4273X	EBSLEC-4273X	Oil Pipe	1	465	EBSLEC-465	Screw	4	
428	EBSLEC-428	Nut	1	466	EBSLEC-466	Baffle	1	
430A	EBSLEC-430A	Motor Assembly	1	467(+)	EBSLEC-467+	Battery Clip(+)	1	
431	EBSLEC-431	Bolt	2	467(-)	EBSLEC-467-	Battery Clip(-)	1	
432A	EBSLEC-432A	Electromagnetic Switch	1	468	EBSLEC-468	Nut	1	
433	EBSLEC-433	Gasket	2	469A	EBSLEC-469A	Electronic Charger	1	
434	EBSLEC-434	Nut	2	470	EBSLEC-470	Pull Handle	1	
435	EBSLEC-435	Screw	6	471	EBSLEC-471	Battery Safeguard	2	
436	EBSLEC-436	Gasket	6	472	EBSLEC-472	Heat Conduction Plate	1	
4373X	EBSLEC-4373X	Motor Cover	1	401A	EBSLEC-401A	Seal Gasket	2	
1900	EBSLEC-1900	Pump Assembly						
NV-XE	EBSLEC-NV-XE	Seal Kit Ass'y Of EBSL22N	Contains: 305, 306, 308, 309, 312, 318, 319, 326, 329, 330, 334A, 335A, 336A, 338A, 401, 401A, 407, 411					

Fig. 10 Wiring Diagram of EBSL22N

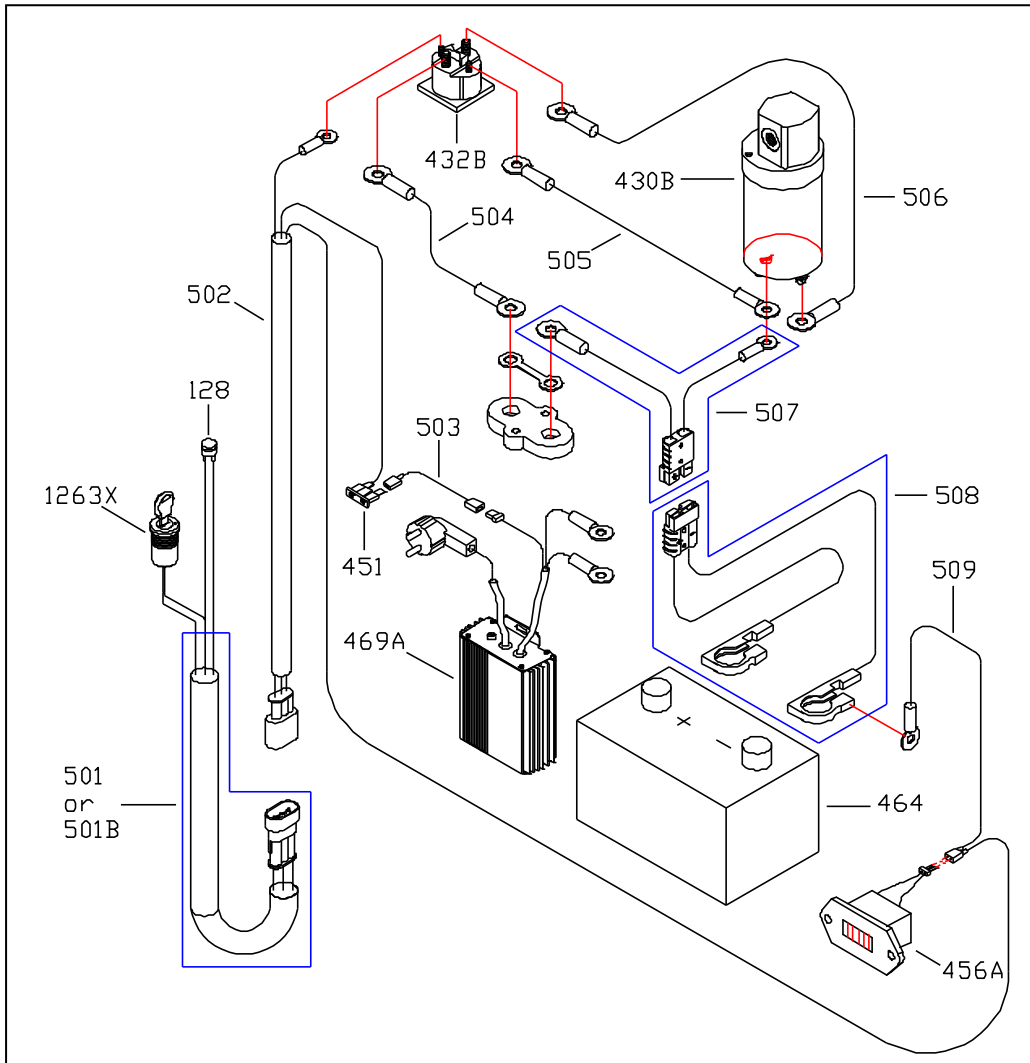


Fig. 10 Wiring Diagram of EBSL22N

No.	Mobile Part #	Description	Qty	No.	Mobile Part #	Description	Qty
501	EBSLWD-501	Wire harness of 1001E-D	1	506	EBSLWD-506	Wire harness 6	1
502	EBSLWD-502	Wire harness 2	1	507	EBSLWD-507	Wire harness 7	1
503	EBSLWD-503	Wire harness 3	1	508	EBSLWD-508	Wire harness 8	1
504	EBSLWD-504	Wire harness 4	1	509	EBSLWD-509	Wire harness 9	1
505	EBSLWD-505	Wire harness 5	1				



**MOBILE INDUSTRIES, INC.**  
3750B Laird Rd - Unit 2 & 3  
Mississauga ON, L5L 0R6  
Canada

Toll Free: 1 800 527 4612 • Local 905 279 5370  
Email: [info@mobilept.com](mailto:info@mobilept.com)

**MOBILEPT.COM**