



OPERATING INSTRUCTIONS & PARTS LIST

ELT770N LIFT TABLE

VERSION	N/A
MODEL	ECO ELT770N LIFT TABLE
APPLICABLE PRODUCTS	ECO ELT770N

NOTE: Owner and operator MUST read and understand the operating instructions before using the unit.

Thank you for using this lift table. Your lift table is made of high quality steel and is designed for the horizontal lifting and transport of loads on a level, fixed base. For your safety and correct operation, please carefully read this instruction before using it and keep it on file for future reference.

NOTE: All of the information reported herein is based on data available at the moment of printing. We reserve the right to modify our own products at any moment without notice and incurring in any sanction. So, it is suggested to always verify possible updates.

1. WARNINGS

- 1、 DO NOT put foot or hand in scissors mechanism.
- 2、 DO NOT allow other person to stand in front or behind lift table when it is moving.
- 3、 DO NOT move lift table when table is in raised position. Load could fall down.
- 4、 DO NOT enter under table.
- 5、 DO NOT overload lift table.
- 6、 DO NOT put foot in front of rolling wheels, Injury could fall down.
- 7、 WATCH difference of floor level when moving lift table. Load could fall down.
- 8、 DO NOT use lift table on slope or inclined surface, lift table may become uncontrollable and create danger.
- 9、 DO NOT lift people. People could fall down and suffer severe injury.

2. CAUTION

- 1、 Read this operation manual carefully and understand completely operating lift table. Improper operation could create danger.
- 2、 This lift table is a movable lifter designed to lift or lower rated load on table. DO NOT use lift table for other purpose than its intended use.
- 3、 DO NOT allow person to operate lift table that dose not understand its operation.
- 4、 DO NOT lower table too fast. Load could fall down and create danger.
- 5、 KEEP watching the condition of load. Stop operating lift table if load becomes unstable.
- 6、 Braking lift table when sliding load on or off table.
- 7、 DO NOT side or end load. Load must be distributed on at least 80% of table area.
- 8、 DO NOT use lift table with unstable, unbalanced loosely load.
- 9、 Practice maintenance work according to service instructions.
- 10、 DO NOT modify lift table without manufacturers written consent.
- 11、 REMOVE load from table and use safety stopper to prevent table from lowering when servicing lift table.
- 12、 This lift table is not designed to be water resistant. Use lift table under dry condition.

3. DAILY INSPECTION

Daily inspection is effective to find the malfunction or fault on lift table. Check lift table on the following points before operation.

- (1) Check for scratch, bending or cracking on the lift table.

- (2) Check if there is any oil leakage from the cylinder.
- (3) Check the vertical creep of the table.
- (4) Check the smooth movement of the wheels.
- (5) Check the function of brake.
- (6) Check if all the bolts and nuts are tightened firmly.

CAUTION: DO NOT use lift table if any malfunction or fault is found.

4. OPERATING LIFT TABLE

4-1. How to use the brake.

CAUTION: Brake lift when not moving it in order to prevent sudden movement.

The brake is equipped with the swivel caster on the right side.

- (1) Brake the wheel, press the brake pedal.
- (2) Release the brake, lift up the brake pedal.

4-2. Lifting the table

WARNING

1. DO NOT overload lift table. Stay within its rated capacity.
2. DO NOT side or end. Load must be distributed on at least 80% of table area.

Press the lifting pedal several times until the table reaches the desired position. The table does not elevate after reaching the highest position even if the lifting pedal is pressed. The table lowers slightly after reaching the highest position.

MAXIMUM CAPACITY OF TABLE
ELT770N
350Kg / 770lbs

NOTE: The hydraulic cylinder is designed to hold table. As is the nature of hydraulic system, table lowers very slowly over and extended period of time. Please note the table does not stay at the same position indefinitely.

4-3. Lowering table

WARNING: DO NOT put foot or hand in scissors mechanism

- Pull the control handle to make the table lower.

5. Specifications

Model	Capacity (kg)	Table (mm)	Table Height (mm)	Wheel (mm)	Weight (Kg)
ELT770N	350 / 770lbs	910x500 / 36x20"	355-1300 / 13.9-51.2"	□125 / 4.9"	102 / 231lbs

6. Service Instructions

6-1. Lubricate each point described below every month:

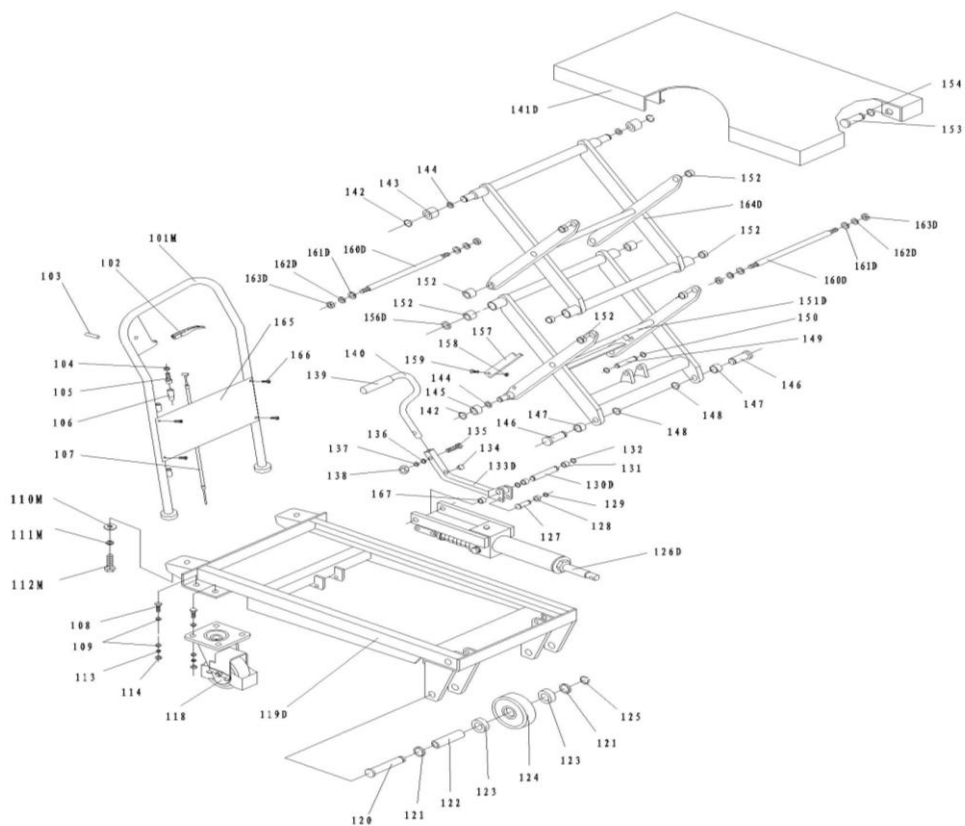
6-2. Change hydraulic oil every 12 months.

Lubricating Points

- (1) Fitting of cylinder---Oil
- (2) Roller friction surface---Grease
- (3) Link pin ---Oil
- (4) Pedal fitting point---Oil

(5) Grease nipple---Grease

7. Parts List of Table

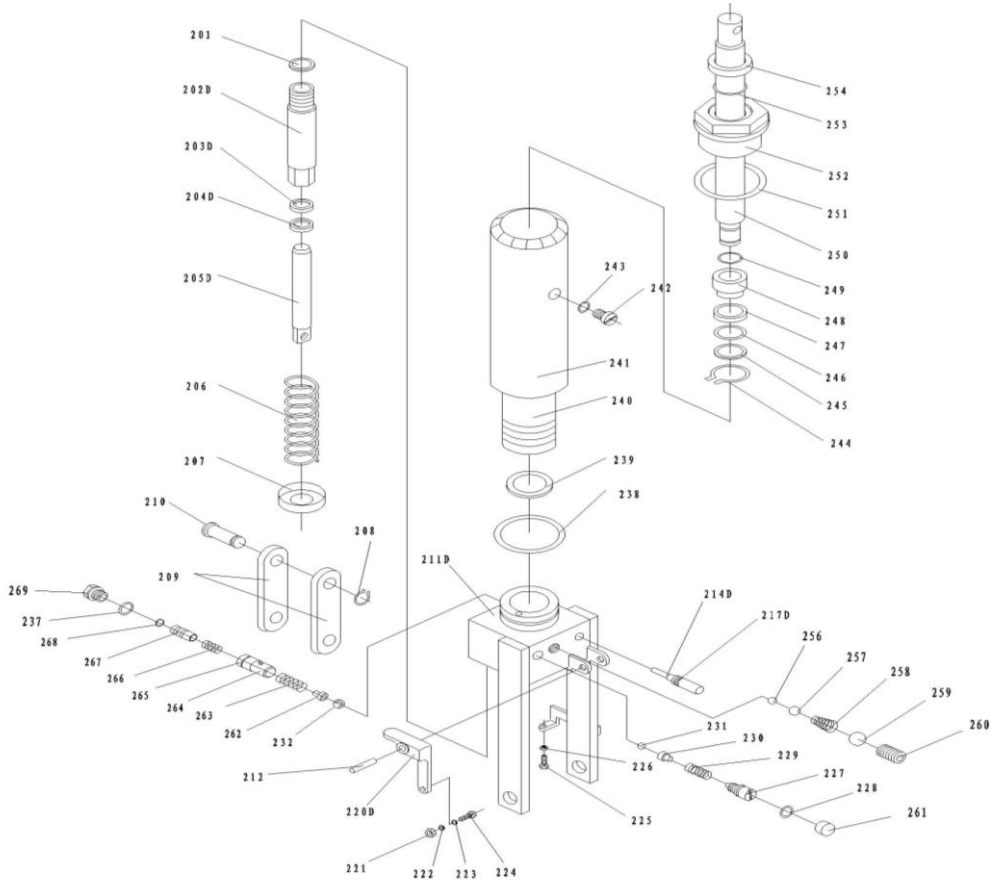


No	Mobile #	Description	Qty.
101M	ELT770N-101M	Handle Grip	1
102	ELT770N-102	Control Handle	1
103	ELT770N-103	Elastic Pin	1
104	ELT770N-104	Nut	1
105	ELT770N-105	Bolt with Hole	1
106	ELT770N-106	Jacket	1
107	ELT770N-107	Pull Rod	1
108	ELT770N-108	Bolt	8
109	ELT770N-109	Washer	16
110M	ELT770N-110M	Big Washer	2
111M	ELT770N-111M	Elastic Washer	2
112M	ELT770N-112M	Bolt	2
113	ELT770N-113	Elastic Washer	8
114	ELT770N-114	Nut	8
118	ELT770N-118	Universal Wheel	2
119D	ELT770N-119D	Frame	1

120	ELT770N-120	Pin	2
121	ELT770N-121	Washer	4
122	ELT770N-122	Axle	2
No	Mobile #	Description	Qty.
123	ELT770N-123	Bearing	4
124	ELT770N-124	Wheel	2
125	ELT770N-125	Retaining Ring	2
126D	ELT770N-126D	Pump Unit	1
127	ELT770N-127	Pin	1
128	ELT770N-128	Washer	1
129	ELT770N-129	Retaining Ring	1
130D	ELT770N-130D	Pin	1
131	ELT770N-131	Washer	2
132	ELT770N-132	Retaining Ring	2
133D	ELT770N-133D	Connecting Rod	1
134	ELT770N-134	Cushion	1
135	ELT770N-135	Bolt	1
136	ELT770N-136	Washer	1
137	ELT770N-137	Elastic Washer	1
138	ELT770N-138	Nut	1
139	ELT770N-139	Protecting Cover	1
140	ELT770N-140	Pedal Bar	1
141D	ELT770N-141D	Table	1
142	ELT770N-142	Retaining Ring	2
143	ELT770N-143	Roller	2
144	ELT770N-144	Washer	2
145	ELT770N-145	Roller	2
146	ELT770N-146	Pin	2
147	ELT770N-147	Bushing	2
148	ELT770N-148	Retaining Ring	2
149	ELT770N-149	Pin	1
150	ELT770N-150	Retaining Ring	2
151D	ELT770N-151D	Fork Arm	1
152	ELT770N-152	Bushing	8
153	ELT770N-153	Pin	2
154	ELT770N-154	Retaining Ring	2
156D	ELT770N-156D	Washer	4
157	ELT770N-157	Support Plank	2
158	ELT770N-158	Nut	2
159	ELT770N-159	Screw	2
160D	ELT770N-160D	Long Shaft	2
161D	ELT770N-161D	Washer	4
162D	ELT770N-162D	Washer	4
163D	ELT770N-163D	Nut	4
164D	ELT770N-164D	Top Fork Arm	1

165	ELT770N-165	Protecting board	1
166	ELT770N-166	Bolt	4
167	ELT770N-167	Bushing	2

8. Parts List of Pump



No	Mobile #	Description	Qty.
201	ELT770N-201	Seal Washer	1
202D	ELT770N-202D	Pump Cylinder	1
203D	ELT770N-203D	Dust Ring	1
204D	ELT770N-204D	Y-Seal	1
205D	ELT770N-205D	Pump Piston	1
206	ELT770N-206	Spring	1
207	ELT770N-207	Spring Cap	1
208	ELT770N-208	Retaining Ring	1
209	ELT770N-209	Joint Plate	2
210	ELT770N-210	Pin	1
211D	ELT770N-211D	Pump Body	1
212	ELT770N-212	Elastic Pin	1
214D	ELT770N-214D	Strike Pin	1
217D	ELT770N-217D	O-Ring	2
220D	ELT770N-220D	Lever Plate	1
221	ELT770N-221	Nut	1
222	ELT770N-222	Elastic Washer	1
223	ELT770N-223	Washer	1
224	ELT770N-224	Bolt With Hole	1
225	ELT770N-225	Bolt With Hole	
226	ELT770N-226	Nut	1
227	ELT770N-227	Adjusting Bolt	1
228	ELT770N-228	O-Ring	1
229	ELT770N-229	Spring	1
230	ELT770N-230	Seat of Steel Ball	1
231	ELT770N-231	Steel Ball	1
232	ELT770N-232	Steel Ball	1
237	ELT770N-237	Seal Washer	1
238	ELT770N-238	O-Ring	1
239	ELT770N-239	Seal Washer	1

No	Mobile #	Description	Qty.
240	ELT770N-240	Cylinder	1
241	ELT770N-241	Housing	1
242	ELT770N-242	Bolt	1
243	ELT770N-243	Seal Washer	1
244	ELT770N-244	Retaining Ring	1
245	ELT770N-245	Washer	1
246	ELT770N-246	O-Ring	1
247	ELT770N-247	Cup Packing	1
248	ELT770N-248	Piston	1
249	ELT770N-249	O-Ring	1
250	ELT770N-250	Piston Rod	1
251	ELT770N-251	Seal Washer	1
252	ELT770N-252	Cylinder Cap	1
253	ELT770N-253	O-Ring	1
254	ELT770N-254	Dust Ring	1
256	ELT770N-256	Steel Ball	1
257	ELT770N-257	Steel Ball	1
258	ELT770N-258	Spring	1
259	ELT770N-259	Steel Ball	1
260	ELT770N-260	Screw	1
261	ELT770N-261	Cup	1
262	ELT770N-262	Seat of Steel Ball	1
263	ELT770N-263	Spring	1
264	ELT770N-264	Seat of Valve	1
265	ELT770N-265	O-Ring	1
266	ELT770N-266	Spring	1
267	ELT770N-267	Core of Valve	1
268	ELT770N-268	Retaining Ring	1
269	ELT770N-269	Plug	1



MOBILE INDUSTRIES, INC.
3750B Laird Rd - Unit 2 & 3
Mississauga ON, L5L 0R6
Canada

Toll Free: 1 800 527 4612 • Local 905 279 5370
Email: info@mobilept.com

MOBILEPT.COM