



OPERATING INSTRUCTIONS & PARTS BREAKDOWN

BPS SCISSOR LIFT

VERSION	N/A
MODEL	BPS25 BATTERY OPERATED SCISSOR LIFT
APPLICABLE PRODUCTS	BPS25

Please read and save these instructions. Read carefully before attempting to assemble, install, operate, or maintain the product described. Protect yourself and others by observing all safety information. Failure to comply with instructions could result in personal injury and/or property damage! Retain instructions for future reference.

RULES FOR SAFE OPERATION OF THE BPS25

1. Do not attempt to operate the truck unless you thoroughly understand its operation.
2. Inspect the condition of the truck at the start of each shift. Check operation of mechanical parts, safety features and controls.
3. Keep truck clean. Remove dirt and rubbish which make footing uncertain and remove obstructions which lodge in the mechanisms.
4. Report faulty truck operation to the maintenance department and do not operate until corrected or repaired.
5. Report all accidents immediately.
6. Ensure loads are kept within the rated capacity of the truck.
7. Exercise caution when handling wide or high loads
8. Check any loads to be picked up to ensure that it is tightly packed or packaged. Do not try to lift an unstable load.
9. When operating the truck, keep your hands on the handle and your feet clear of the load being raised or lowered.
10. Ensure load is distributed evenly on forks. Never pick up a load using only one fork.
11. Push truck completely under load to be lifted. Loads should never be lifted with fork tips.
12. This truck is not a toy - never allow anyone to ride on the truck!

SERVICE CHECKLIST

POSSIBLE SOURCES OF TROUBLE AND HOW TO CORRECT THEM

CONDITION	CHECK POINT	ACTION
Motor does not run	<ul style="list-style-type: none">- Battery- Battery Cables- Solenoid Switch- Loose Wires- Circuit Breaker on Charger	<ul style="list-style-type: none">- Possible shorted cell or discharged Battery.- All connections must be tight and free of corrosion.- Use Jumper Cable to by-pass Solenoid. If Motor runs, Solenoid is defective and needs replacing.- Check other Wire connections.- Check all points
Motor runs - will not raise or hold position.	<ul style="list-style-type: none">- Release Valve Rod in Pump- Check Oil in Reservoir- Lift Piston Seal failure	<ul style="list-style-type: none">- Be sure Rod is not binding. Remove from Pump and allow Oil to drain from Port to flush possible dirt from Pump.- If low, fill to capacity: 1" from Filler Hole.- Replace
Motor keeps running	<ul style="list-style-type: none">- Starter Switch	<ul style="list-style-type: none">- Replace.- Tap Solenoid Switch lightly on side to release Contact Wire.
Forks will not raise	<ul style="list-style-type: none">- Pump Valve Assembly- Lift Piston Seal failure	<ul style="list-style-type: none">- Remove Assembly and let Oil drain from unit to flush the opening. Reassemble.- Replace
Forks will not lower	<ul style="list-style-type: none">- Release Plunger	<ul style="list-style-type: none">- Adjust Valve Screw

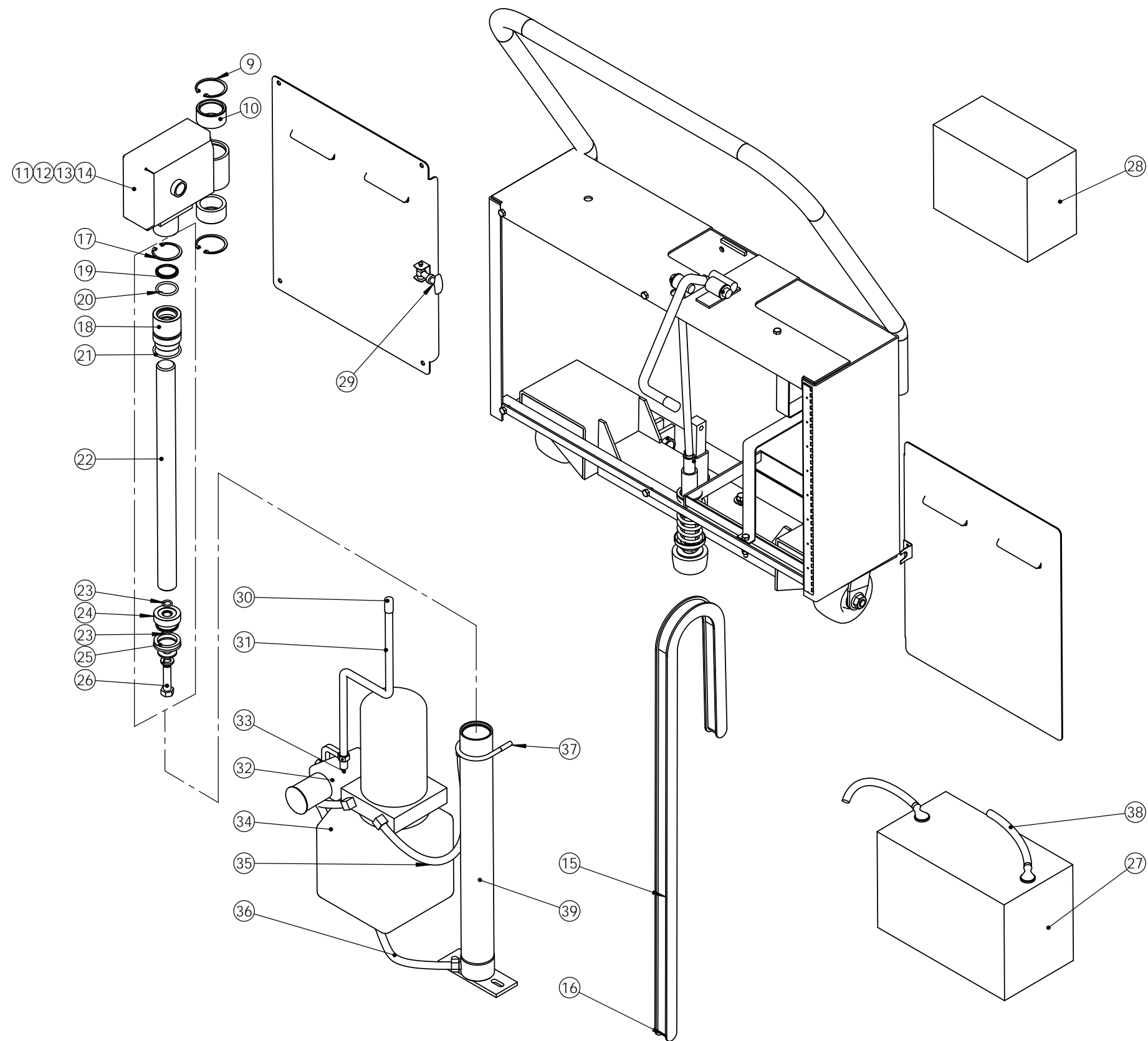
MAINTENANCE

LUBRICATION: A good grade of light Grease should be used to lubricate Wheels only. All Bearings are sealed.

HYDRAULIC SYSTEM: Remove Breather and check level of Hydraulic Oil with unit in lowered position and on level floor. Oil level should be 1" below top of Tank. Too high a level will cause Oil to surge out of Breather. Too low a level will prevent full lift of Carriage and damage Pump. **Abnormal Oil Losses:** Check system for leaks, fittings may work loose. A slight creep of the Carriage without load can be expected in any Hydraulic Cylinder.

ELECTRICAL SYSTEM OF BATTERY UNIT: The Battery should not be allowed to run down. To maintain a full charge, plug Charger cord into 110 Volt 60 Cycle A.C. source when truck is not in use (to a maximum of 24 hours). Charging rate is controlled automatically.

Loose connections are the principle cause of electrical troubles.



ITEM NO.	PART NO.	DESCRIPTION
9	6034	LOCK RING
10	1993	BEARING
11	6015	COVER PULLEY ASSY
12	6016	PULLEY
13	6017	PULLEY AXLE
14	6038	AXLE
15	6020	CHAIN ASSY
16	6020-1	CONNECTION LINK
17	1023	LOCK RING
18	1016	TOP BEARING
19	1014	WIPER
20	1015	'O' RING
21	2004	'O' RING
22	6017	LIFT ROD
23	1018	'O' RING
24	1019	PISTON
25	2007-1	'U' CUP
26	6035	HEX BOLT
27	6001	12V BATTERY
28	6002	CHARGER 12V-10AMP
29	6003	LATCH
30	6021	HAND GRIP
31	6022	LEVER
32	6023	SWITCH
33	6024	BREATHER CAP
34	6025	POWER PACK
35	6026	LOW PRESSURE HOSE
36	6027	HIGH PRESSURE HOSE
37	1030	CLAMP CYLINDER
38	6029	BATTERY CABLE
39	6018	LIFT CYLINDER ASSEMBLY
40	1010-1	LIFT CYLINDER PACKING KIT

STANDARD PARTS LIST MOBILE BPS25 SCISSOR LIFT

MOBILE



MOBILE INDUSTRIES, INC.
37508 Laird Rd - Unit 2 & 3
Mississauga ON, L5L 0R6
Canada

Toll Free: 1 800 527 4612 • Local 905 279 5370
Email: info@mobilept.com

MOBILEPT.COM