



OPERATING INSTRUCTIONS & PARTS BREAKDOWN

NON-TELESCOPIC STACKERS

VERSION	N/A
MODEL	B SERIES
APPLICABLE PRODUCTS	B60CSA, B70CSA, B80CSA

Please read and save these instructions. Read carefully before attempting to assemble, install, operate, or maintain the product described. Protect yourself and others by observing all safety information. Failure to comply with instructions could result in personal injury and/or property damage! Retain instructions for future reference.



The Mobile Stackers are lifting devices featuring easy, flexible, reliable and safe operation suitable for transportation of loads in such applications as warehouses, manufacturing facilities, storerooms and workshops, and require no special training or certification.

In order to help you use this piece of equipment correctly, please read the instruction manual carefully before operating. Unauthorized operation is forbidden. Failure to adhere to these points can result in damage to the truck and/or injury to the operator.

ATTENTION:

1. Overloading is not permitted. All operation should be conducted within the rated load capacity.
2. Never stand or sit on the stacker while in operation.
3. The operator should only operate the stacker while they are positioned behind the machine.
4. Do not operate the stacker if there are people in front of the unit.
5. Never put your hands, feet or any other part of your body underneath the frame, fork or platform assembly.
6. Make sure that loads are evenly distributed on the forks or platform. Do not concentrate loads at one point or load one fork more than the other. If the load is shorter than the forks or the platform, the load should always be placed at the back of the forks or the platform against the backrest. Never lift loads with only one fork, or with the tips of the forks or the platform as this may damage or tip the stacker.
7. Never move the truck while raising or lowering the forks or platform.
8. Do not allow your stacker to drop from one level to another. A drop of one inch more than doubles the load during impact which can result in bending or breaking components of the truck.
9. Always ensure that the load is stable and secure before moving to eliminate the possibility of load shifting.
10. When not in use, the forks or platform should be lowered to avoid potential injury.
11. The stacker is designed to be used on a flat and hard surface. Applying the brake is recommended for applications involving a slope.

OPERATION (Battery model):

1. Push the control lever forward to raise the fork or platform assembly. Pull the handle backward to lower the fork or platform assembly.
2. Mobile stackers are manually propelled. Push or pull using the handles (or the optional 5th wheel assembly) to maneuver the unit. Ensure that the operator's feet are clear of the frame when moving the unit.
3. The battery should not be allowed to run down completely so Mobile Stackers are equipped with a 10 amp onboard charger. To recharge the battery simply plug the charger into any standard 110 volt outlet. The required charge time depends on the amount of usage. Normally a fully charged battery should offer 6 to 8 hours of operation time. Units used frequently can be plugged in overnight (to a maximum of 24 hours) to ensure battery levels. Units used sparingly may only need to be plugged in weekly for recharging. The charger has an overload protection feature to prevent damaging the battery.

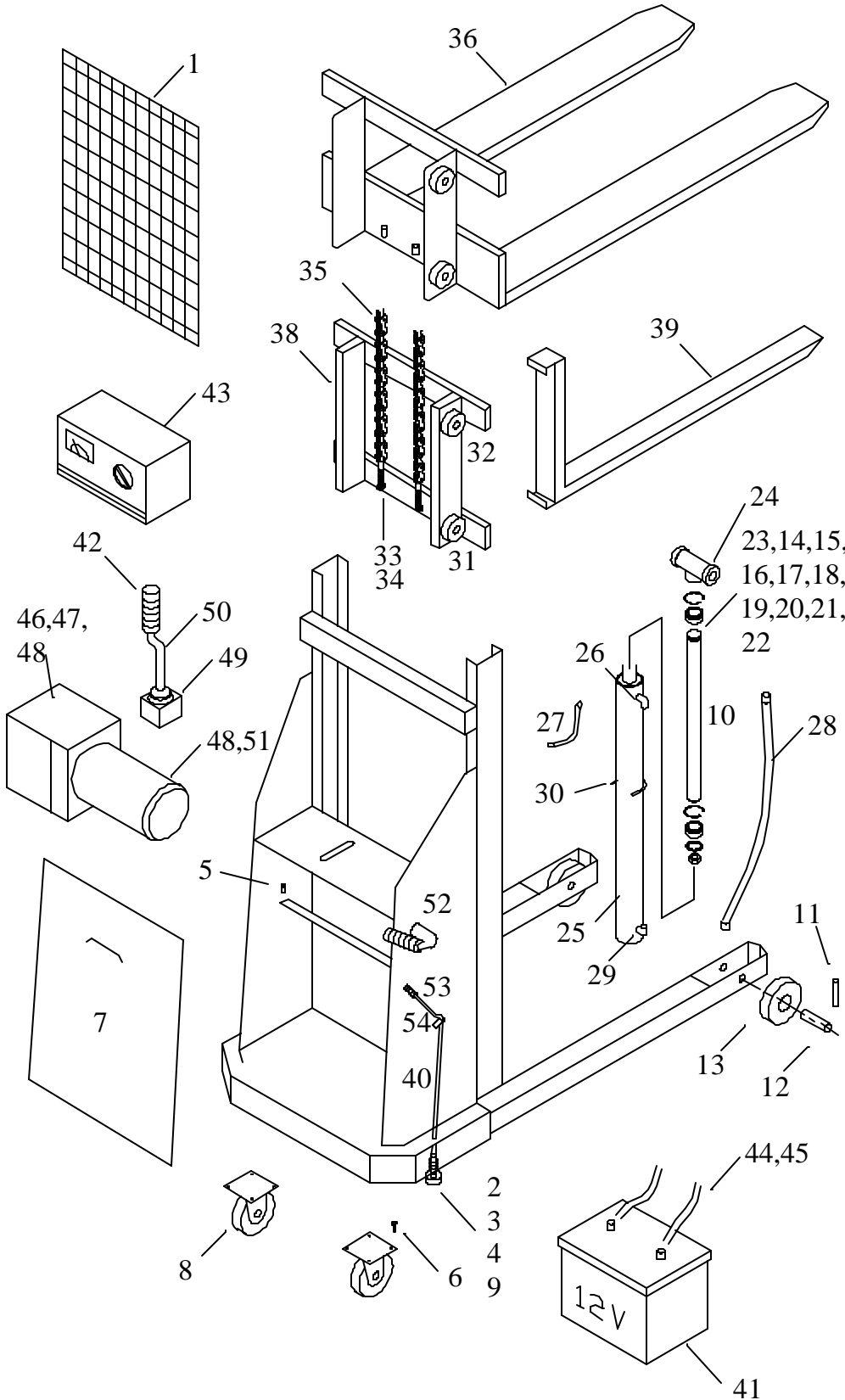
MAINTENANCE:

1. **Lubrication:** It is recommended that a good grade of light grease should be applied to lubricate chain, rollers and wheels monthly. Wipe mast channels and apply light grease sparingly to inside surface.
2. **Hydraulic System:** Remove breather and check level of hydraulic oil with Stacker on level floor and in lowered position. Oil level should be 1" below top of the tank. If oil level is too high, it may cause oil to surge out of breather; if it is too low, it may prevent full lift of carriage and/or damage pump. For abnormal oil losses, check system for leaks as fittings may work loose. A slight creeping of the carriage without load can be accepted in any hydraulic cylinder.
3. **Electrical System:** Check connections as loose connections are the principal cause of electrical problems.
4. Use premium HVI hydraulic oil or equal (Recommended: AW32 Standard Hydraulic Oil). Other oils, fluids or solvents may damage the hydraulic system.

TROUBLESHOOTING:

CONDITION	CHECK POINT	ACTION
Motor does not run	Battery	Possible shorted cell or discharged battery
	Battery cables	All connections must be tight and free of corrosion
	Solenoid switch	Use jumper cable to bypass solenoid. If motor runs, solenoid is defective and needs replacing
	Loose wires	Check other wire connections
Ammeter jumps back and forth	All above points	Battery in backwards
	Circuit breaker on charger	Check all point
Motor runs - will not raise or hold position	Release valve rod in pump	Be sure rod is not binding. Remove from pump and allow oil to drain from port to flush possible dirt from pump.
	Check oil level in reservoir	If low, fill to capacity - 1" from filler hole
Motor keeps running	Starting Switch	Replace
		Tap solenoid switch lightly on side to release contact wire
Carriage lowers too slowly	Rollers in mast	Check for binding
Carriage will not raise	Pump valve assembly	Remove assembly and let oil drain from unit to flush the opening. Reassemble.
Carriage will not lower	Release plunger	Adjust valve screen.

Mobile Standard Battery Model Stacker Parts List



Item No.	Part No.	Part Name
1	1001	Screen Assembly, Safety
2	1002	Spring, Compression
3	1003	Washer, Flat
4	1004	Pad, Brake
5	1005	Bolt & Nut
6	1006	Bolt, Hexagon
7	1007	Door
8	1008	Caster
9	1009	Bolt
10	1010	Cylinder Packing Kid
11	1011	Spiral Pin
12	1012	Axle
13	1013	Wheel
14	1014	Wiper
15	1015	O Ring
16	1016	Head (Top)
17	1017	Piston Rod
18	1018	O Ring
19	1019	Piston
20	1020	U Cup
21	1021	Locking Washer
22	1022	Nut
23	1023	Locking Ring
24	1024	Roller Assembly
25	1025	Cylinder
26	1026	Adapter Union 90
27	1027	Hose Assembly
28	1028	Hose Assembly H.P.
29	1029	Elbow 90
30	1030	Bolt U
31	1031	Roller
32	1032	Bearing Roller
33	1033	Nut
34	1034	Stud
35	1035	Roller Chain
36	1036	Fork Assembly
37	1037	Platform Assembly
38	1038	Plate Assembly
39	1039	Fork Assembly
40	1040	Rod, Brake
41	1041	Battery
42	1042	Hand Grip
43	1043	Charger
44	1044	Battery Cable
45	1045	Battery Cable
46	1046	Motor
47	1047	Pump
48	1048	Breather Filler Cap
49	1049	Starter Switch
50	1050	Handle
51	1051	Oil Tank
52	1052	Hand Grip
53	1053	Hand Grip
54	1054	Upper rod, brake





MOBILE INDUSTRIES, INC.
3750B Laird Rd - Unit 2 & 3
Mississauga ON, L5L 0A6
Canada

Toll Free: 1 800 527 4612 • Local 905 279 5370
Email: info@mobilept.com

MOBILEPT.COM